

Microsoft™ SQL Server 2005 Express Edition Installation Instructions

September 2009

This publication was written for ComplianceOne.

Publication Information / Version

Microsoft™ SQL Server 2005 Express Edition Installation Instructions
September 25, 2009, Revision 1.0

Distributed Subject to Terms of a License or other Agreement

The contents of this publication, including its appendices, exhibits, and other attachments, as updated or revised, are highly confidential and proprietary to Wolters Kluwer Financial Services, Inc. or its subsidiaries or affiliates (“Wolters Kluwer Financial Services”). This publication is distributed pursuant to a Non-Disclosure Agreement, Evaluation Agreement, License Agreement and/or other similar agreement(s) with Wolters Kluwer Financial Services, Inc. or its subsidiary or affiliate. Unless otherwise specifically provided in such agreement(s), the reproduction of this publication is strictly prohibited. Use and distribution of this publication are also subject to the responsibilities and obligations of such agreement(s), which require confidential treatment of this publication and its contents.

Information in this guide is subject to change without notice and does not represent a commitment on the part of Wolters Kluwer Financial Services.

Do Not Reproduce or Transmit

Unless otherwise specifically authorized in the agreement or license under which this publication has been provided, no part of this publication may be posted, played, transmitted, distributed, copied or reproduced in any form or by any means, electronic or mechanical, including photocopying, recording, or retaining on any information storage and retrieval system, without prior written permission from Wolters Kluwer Financial Services.

Requests for permission to reproduce content should be directed to Wolters Kluwer Financial Services, Inc., Corporate Legal Department, by telephone at 1-800-397-2341.

Not a Substitute for Legal Advice

This publication is intended to provide accurate and authoritative information about the subject matter covered based upon information available at the time of publication. Examples given in this publication are for illustrative purposes only.

Development of this publication and the software (including forms, disclosures, reports, and other documents generated by the software) or other products that it describes was based on Wolters Kluwer Financial Services' understanding of various laws, regulations and commentaries. Wolters Kluwer Financial Services cannot and does not guarantee that its understanding is correct.

This publication is not intended, and should not be used, as a substitute for legal, accounting, or other professional advice. Wolters Kluwer Financial Services is not engaged in providing legal, accounting or other professional services. If legal or other professional assistance is required, you should seek the services of a competent professional. We encourage you to seek the advice of your own attorney concerning all legal issues involving the use of this publication and any products described in this publication. If your interpretations or your counsel's interpretations are contrary to those expressed in this publication, you should of course, follow your/your counsel's interpretations.

The following notice is required by law:

WOLTERS KLUWER FINANCIAL SERVICES' PRODUCTS AND SERVICES ARE NOT A SUBSTITUTE FOR THE ADVICE OF AN ATTORNEY.

Warranty Disclaimer

Except only for the warranties (if any) expressly set forth in the agreement(s) under which this publication is provided (i.e., your agreement or license for the described product), this publication is provided “as is”, and Wolters Kluwer Financial Services makes no warranty, express, implied, by description, by sample or otherwise, and in particular and without limitation, makes no implied warranties of merchantability or fitness for purpose. No modifications to this Warranty Disclaimer are authorized unless in writing and signed by the President or a Vice President of the Wolters Kluwer Financial Services entity licensing the product described in this publication.

Attributions and Acknowledgements

ComplianceOne Solution is a trademark of Wolters Kluwer Financial Services, Inc. All other trademarks are the property of their respective owners.

Copyright Information

©2009 Wolters Kluwer Financial Services, St. Cloud, Minnesota

This publication is the confidential information of Wolters Kluwer Financial Services. Distribution of this publication is subject to restrictions in the license or agreement under which this publication is provided to authorized Wolters Kluwer Financial Institution customers.

All rights reserved.

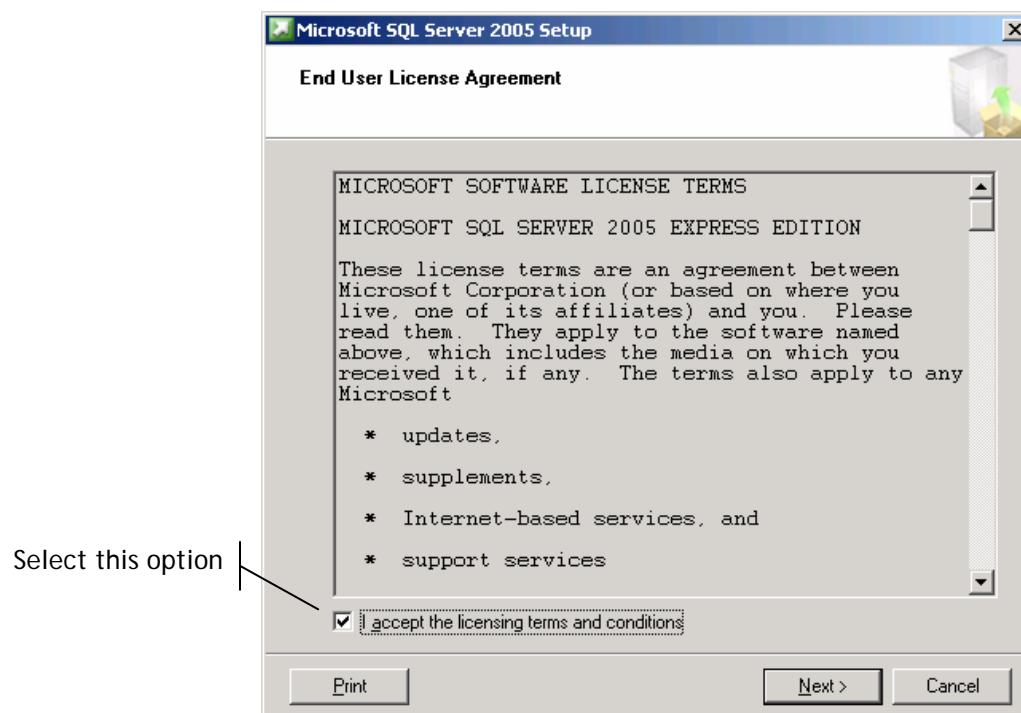
Table of Contents:

SQL Server Installation	3
Enable Network Protocols	12
Install Microsoft SQL Server Management Studio Express.....	13
Create SQL User for ComplianceOne.....	14

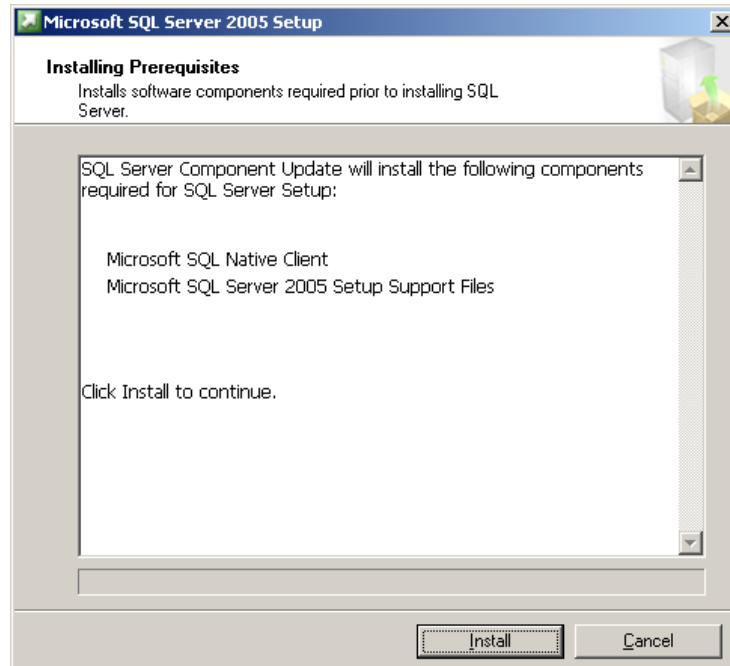
Microsoft SQL Server 2005 Express Edition

SQL Server Installation

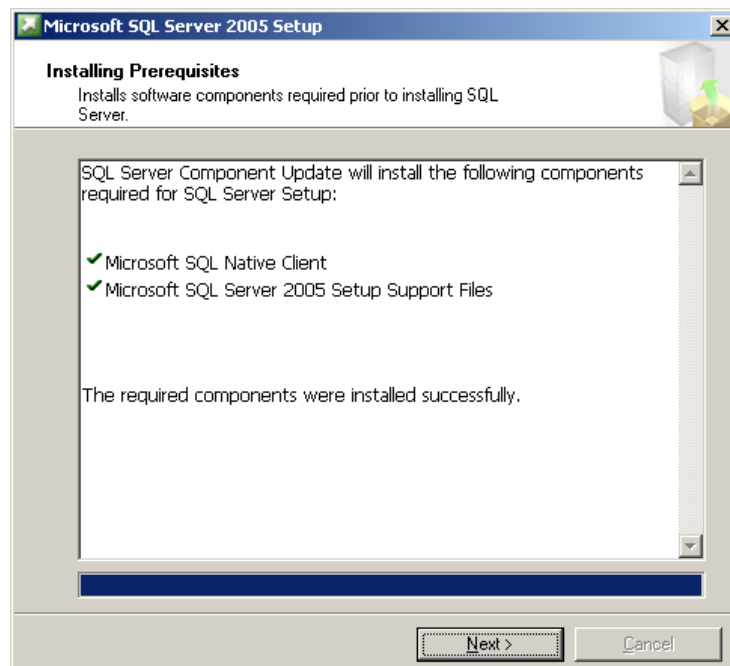
1. To install SQL Server 2005 Express Edition:
2. In Windows Explorer, navigate to the **Applications\Utilities\SQL_Server_Express** folder on the ComplianceOne installation CD.
3. Double-click **SQLEXP32.EXE** to begin installation.
4. On the *End User License Agreement* screen, select the checkbox to indicate acceptance of the licensing terms and conditions and click **Next** to continue.



5. On the *Installing Prerequisites* screen, click **Install** to install the SQL prerequisite components.



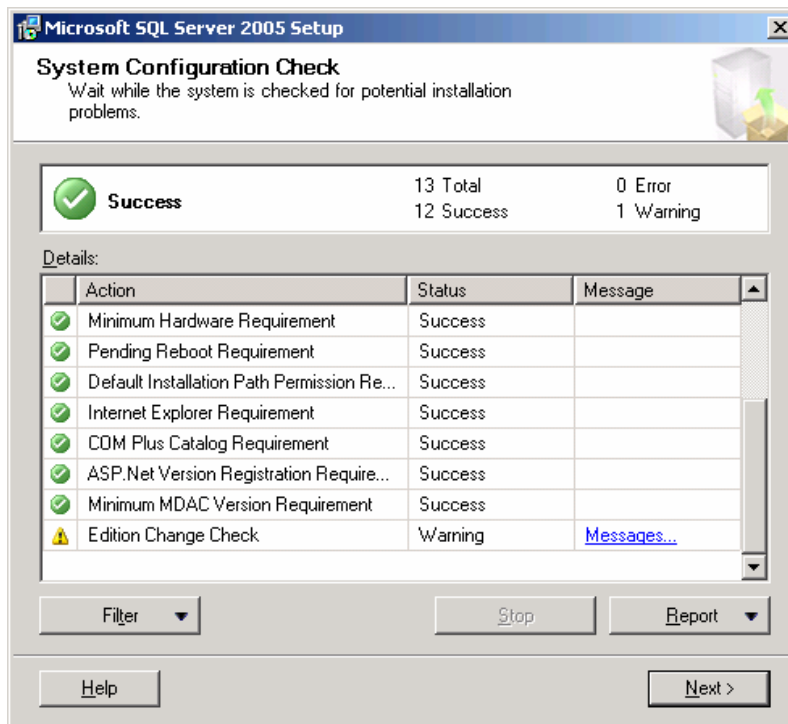
6. Once the prerequisite components are installed, click **Next** to continue.



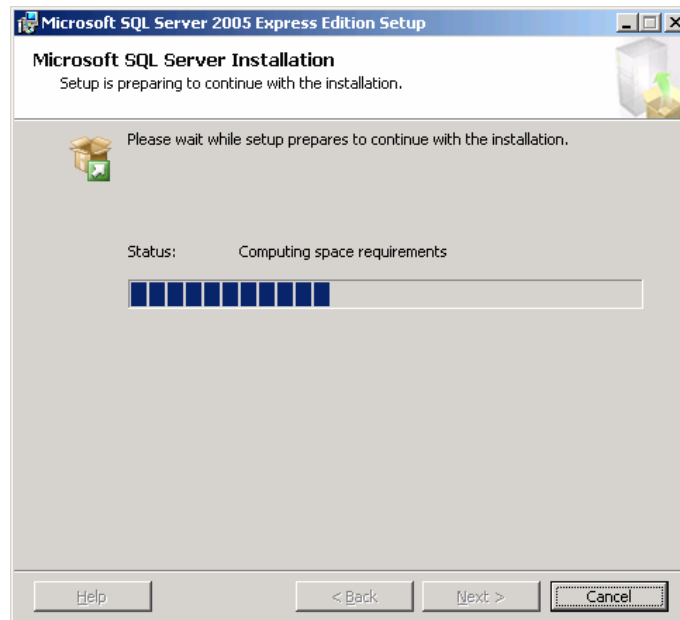
- On the *Welcome* screen, click **Next** to continue the installation.



- On the *System Configuration Check* screen, click **Next** to continue.

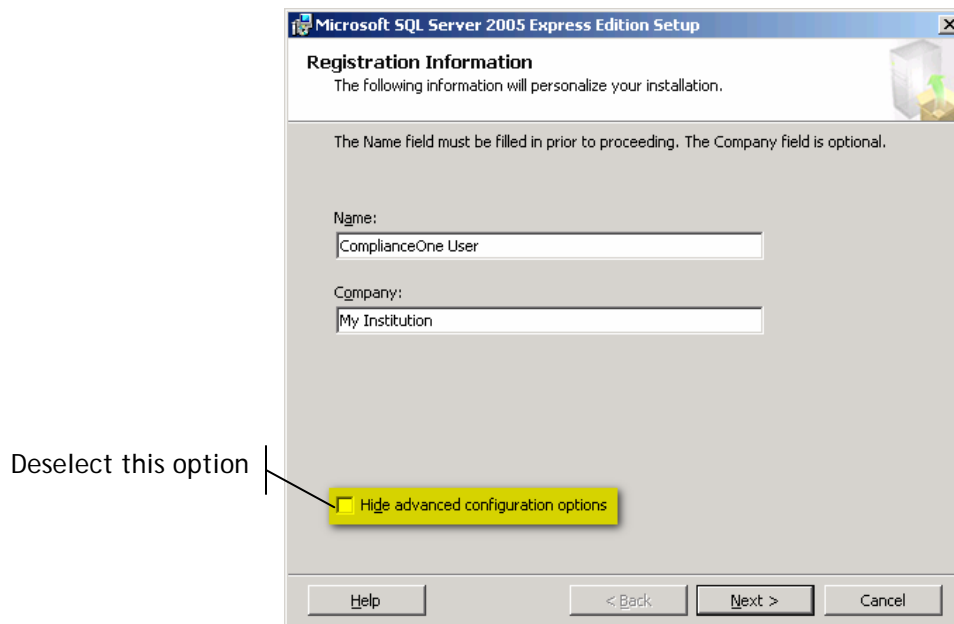


9. The installation process begins.

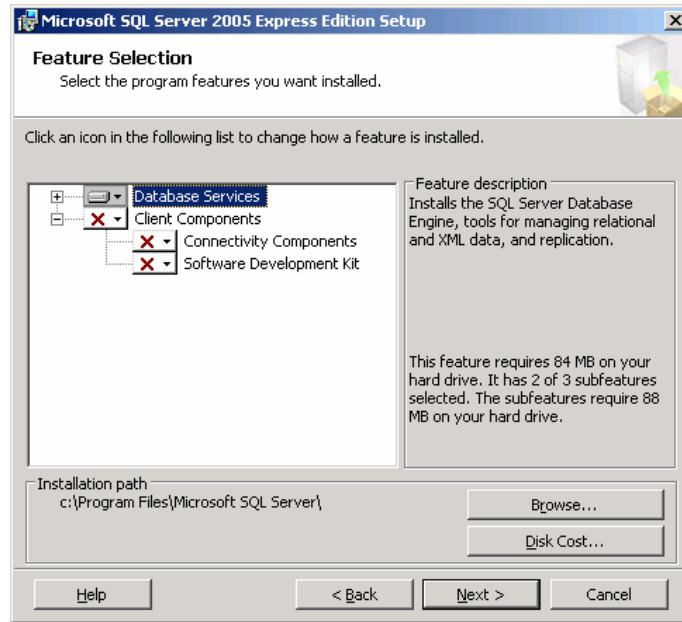


10. Complete Name and Company information.

11. Deselect the Hide advanced configuration options checkbox and click Next.

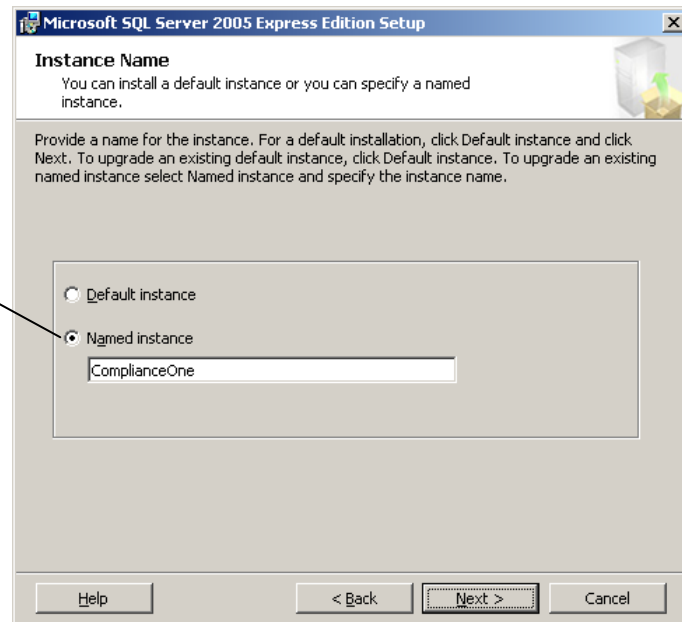


- On the *Feature Selection* screen, accept the defaults (recommended) and click **Next** to continue. Or click **Browse** to select a different location for Microsoft SQL Server Express.

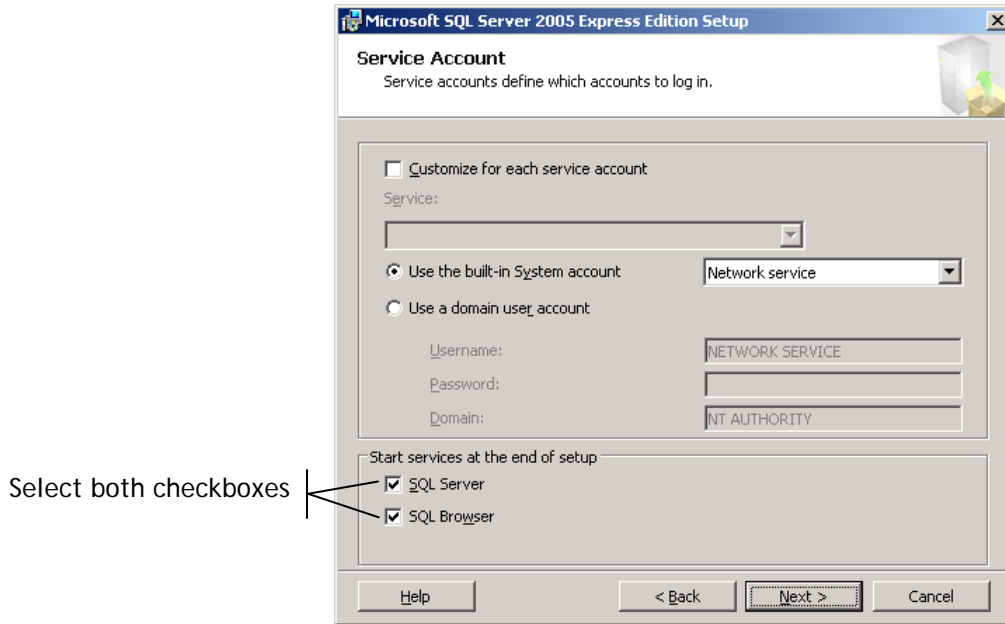


- On the *Instance Name* screen, select **Named instance** and type **ComplianceOne** for the instance name and click **Next** to continue. (If this screen is not displayed, click back to the *Registration Information* screen and remove the checkmark from **Hide advanced configuration options**.)

Select this option

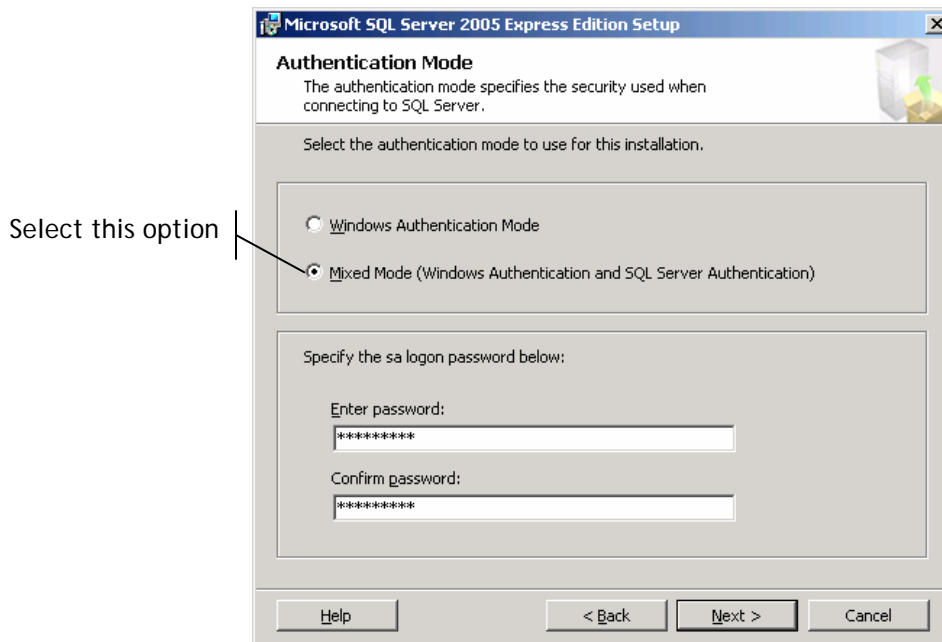


14. On the *Service Account* screen, select both options within the *Start services at the end of setup* area and click **Next** to continue.

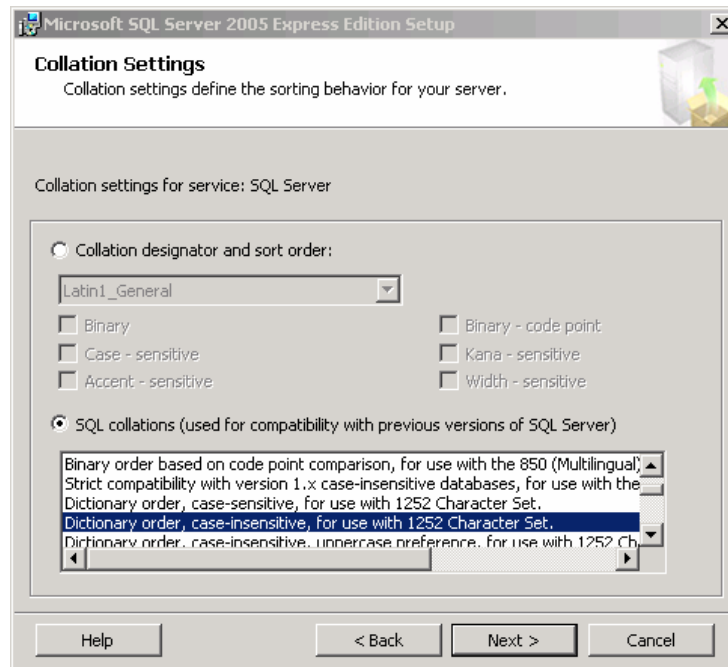


15. On the *Authentication Mode* screen, select **Mixed Mode**.

16. Type in the desired password for the System Administrator (sa) account. Please note that the password is case sensitive. Click **Next** to continue.

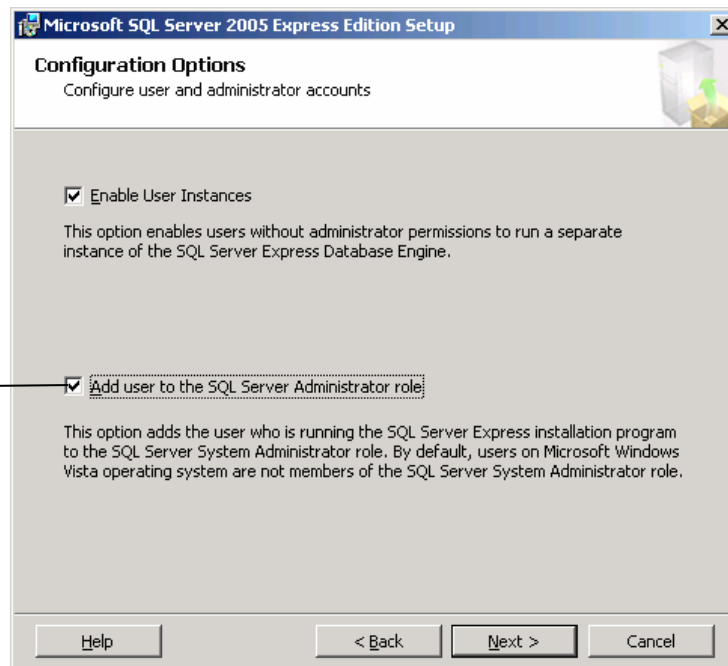


17. On the Collation Settings screen, leave the default options and click **Next** to continue.

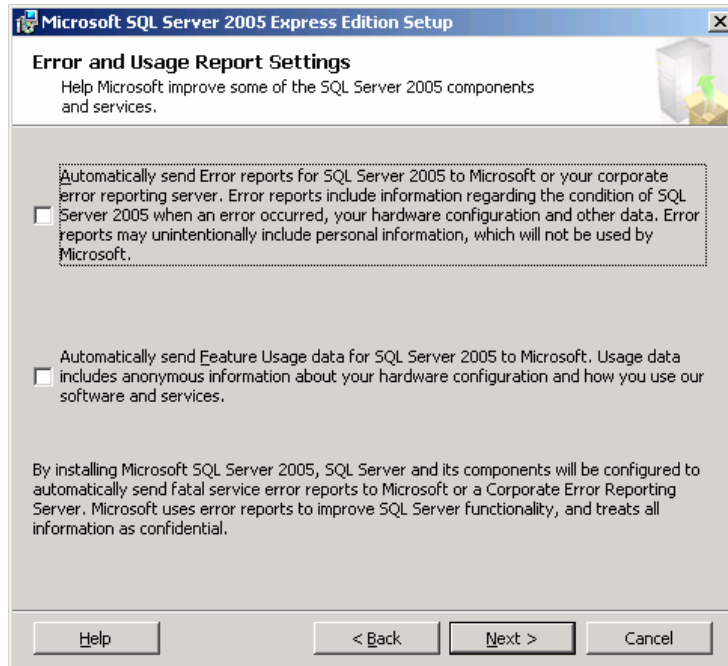


18. On the Configuration Options screen, select the option to *Add user to the SQL Server Administrator role* and click **Next** to continue.

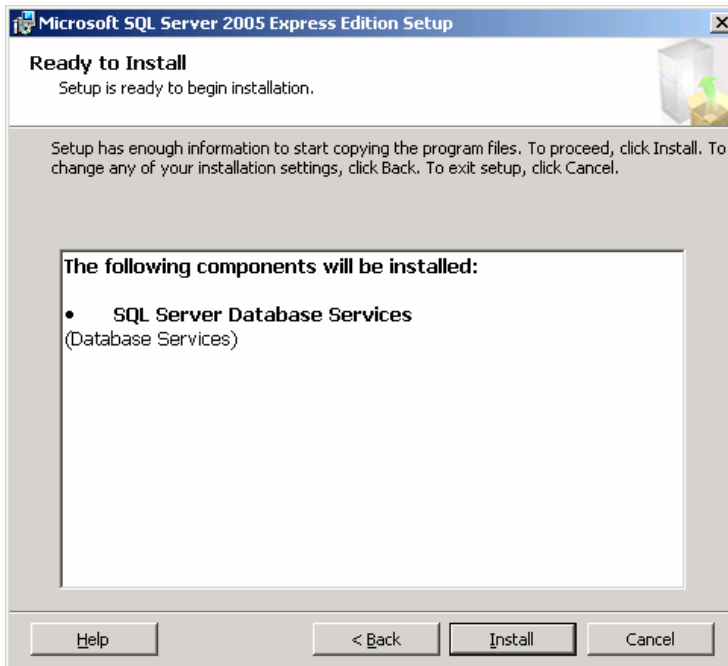
Select this option



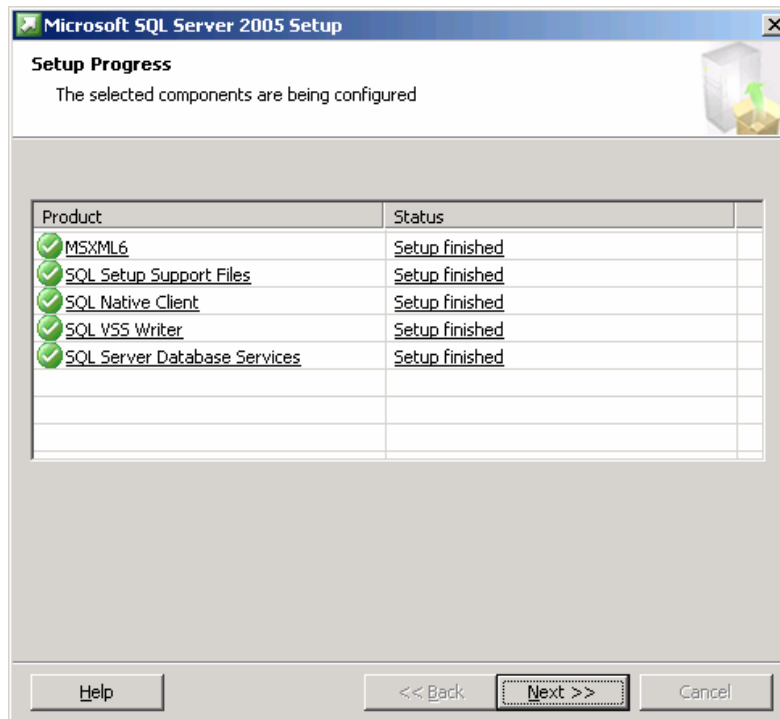
19. On the *Error and Usage Report Settings* screen, accept the defaults and click **Next** to continue.



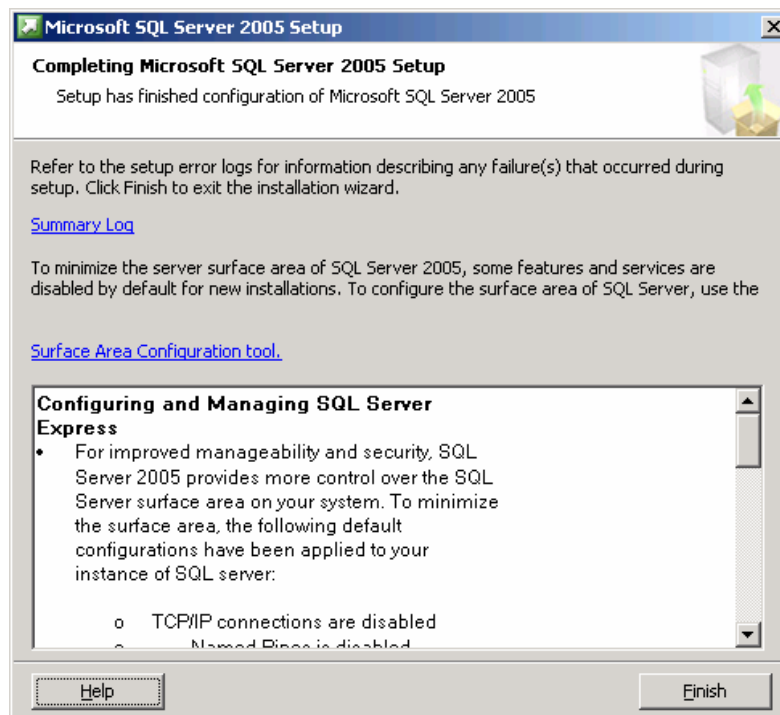
20. On the *Ready to Install* screen, click **Install** to continue.



21. On the *Setup Progress* screen, click *Next* to continue.



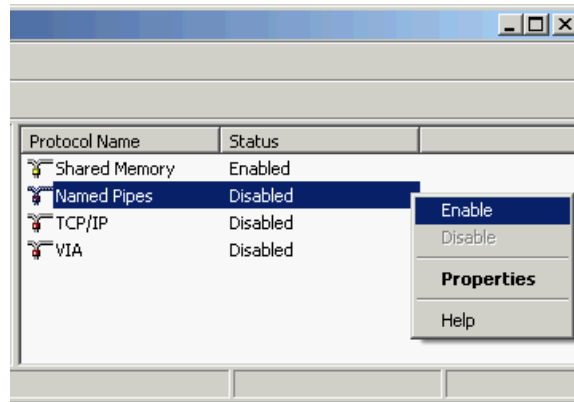
22. Click *Finish* to complete the install and close this screen.



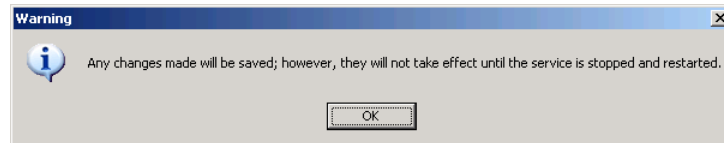
Enable Network Protocols

To complete the SQL Server 2005 installation, network protocols must be enabled.

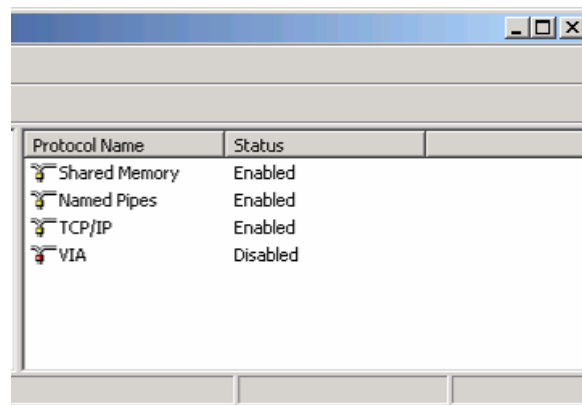
1. From the Start menu select **Programs → Microsoft SQL Server 2005 → Configuration Tools → SQL Server Configuration Manager**.
2. In *SQL Server Configuration Manager* expand SQL Server 2005 Network Configuration and select **Protocols for COMPLIANCEONE**.
3. In the right side panel, right-click **Named Pipes** and select **Enable**.



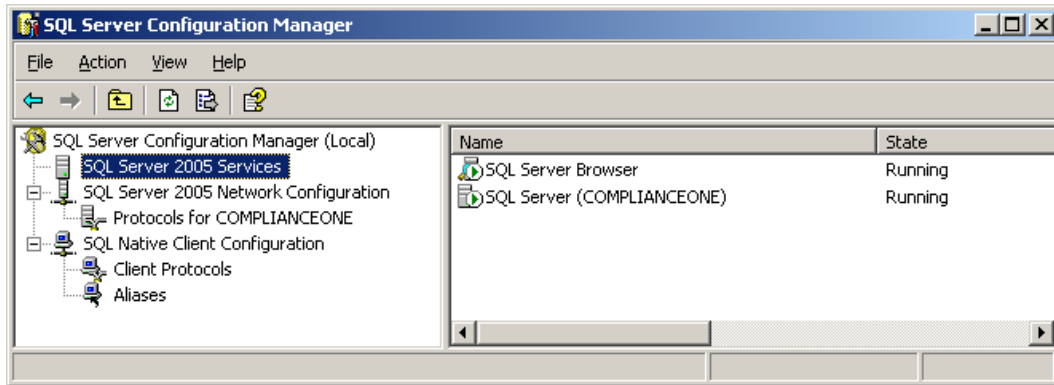
4. Click **OK** on the warning about changes not taking effect until you restart the service.



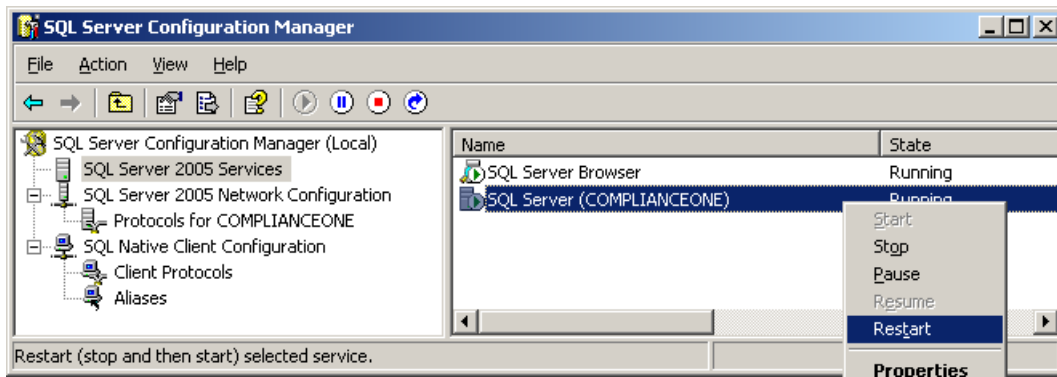
5. Repeat the above steps for **TCP/IP**
6. When complete, the right panel of the screen should look like this:



7. Select SQL Server 2005 Services as shown below.



8. In the right side panel, right-click on the SQL Server (COMPLIANCEONE) service and select Restart.



9. Once the SQL Server service restarts close SQL Server Configuration Manager.

Install Microsoft SQL Server Management Studio Express

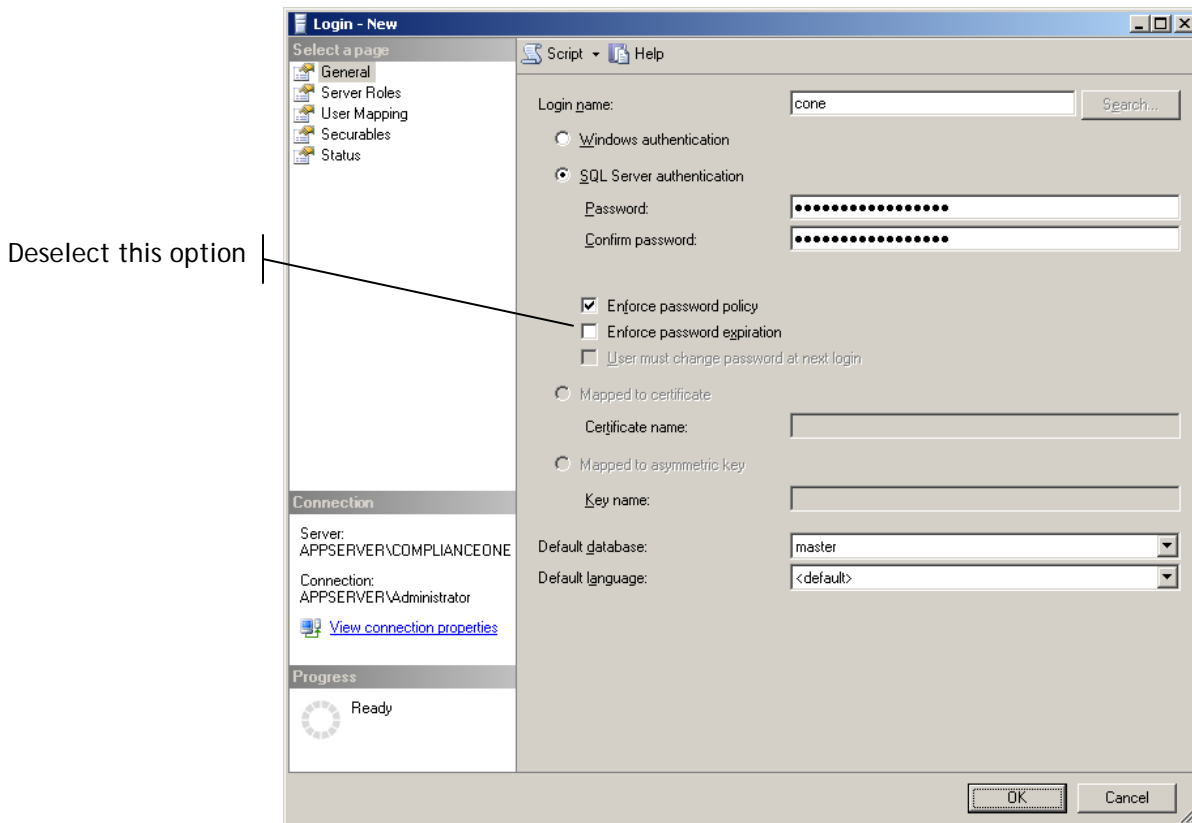
To install SQL Server Management Studio Express:

1. In Windows Explorer, navigate to the **Applications\Utilities\SQL_Server_Express** folder on the ComplianceOne installation CD.
2. Double-click **SQLServer2005_SSMSEE.msi** to begin the installation.
3. Follow the on-screen prompts to complete the installation process.

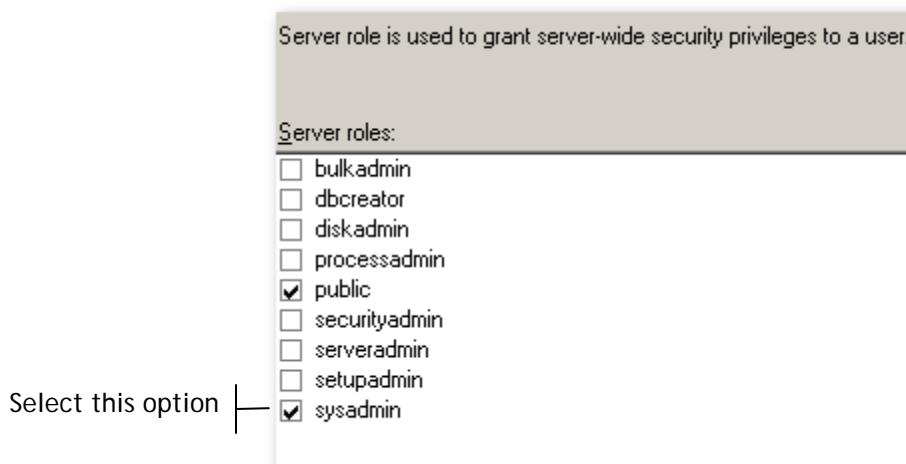
Create SQL User for ComplianceOne

Follow these steps to create a user in SQL Server for use by ComplianceOne.

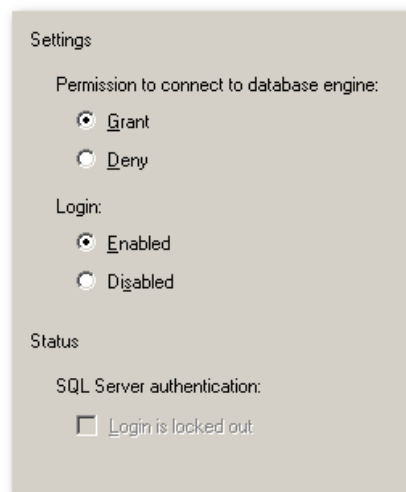
1. From the Start menu select Programs → Microsoft SQL Server 2005 → SQL Server Management Studio Express.
2. Click **Connect**.
3. Expand the **Security** folder.
4. Right-click on **Logins** and select **New Login**.
5. On the *Login - New* screen, complete the information as follows:
6. In the **Login name** field, type **cone**.
7. Select **SQL Server authentication**.
8. In the **Password** and **Confirm password** fields, type a password for this account. Please note that the password is case sensitive.
9. Deselect **Enforce password expiration** to prevent this account from expiring.



10. Select the **Server Roles** page in the left panel. Do not modify any other options that were already selected.



11. Select the **sysadmin** checkbox.
12. Select the **Status** page in the left panel.



13. Verify that **Grant** and **Enabled** are selected.
14. Click **OK** to create this user and save these settings.
15. Make note of the login name and password as this information will be needed when installing the ComplianceOne program.
16. The installation of Microsoft SQL Server 2005 Express Edition for ComplianceOne is now complete.

How to Contact Us

Support Web Site

Visit our Software Support Web site for documentation downloads, frequently asked questions, training, or support information at the following location: Support.WoltersKluwerFS.com

We believe you will find this to be a valuable and convenient source of support information as well as links to beneficial industry sites.

Downloading

To access the documentation as noted above and in the installation, go to our Software Support Web site, Support.WoltersKluwerFS.com. Select Log In from the upper right corner. Enter your User Name and Password. If you are new to this site, register for a User Name and Password. Once you are logged in, follow the links for ComplianceOne Documentation.

Internet

Also you can visit us on the Web at www.WoltersKluwerFS.com.

E-Mail

E-mail questions or issues to: ComplianceOneSupport@WoltersKluwer.com

Call

You can telephone our SupportLine technicians at 1-800-274-2711, ext. 123660. Our support staff is available Monday through Friday, 7 A.M. to 7 P.M. CST. Voice mail operates continually, allowing you to leave us a message after hours and on weekends. To help us handle your question as quickly as possible, have these items available before you call:

- product name and version number
- customer number
- operating system and version number; service pack numbers, if installed

Fax

You may fax us at (320) 240-4252.

