

# Installation Instructions for Updates

August 2011

This publication was written for ComplianceOne.

**Publication Information / Version**

ComplianceOne™ Solution, Release 2011.3  
Installation Instructions for Updates  
Document Version 1.8, August 2011

**Distributed Subject to Terms of a License or other Agreement**

The contents of this publication, including its appendices, exhibits, and other attachments, as updated or revised, are highly confidential and proprietary to Wolters Kluwer Financial Services, Inc. or its subsidiaries or affiliates (“Wolters Kluwer Financial Services”). This publication is distributed pursuant to a Non-Disclosure Agreement, Evaluation Agreement, License Agreement and/or other similar agreement(s) with Wolters Kluwer Financial Services, Inc. or its subsidiary or affiliate. Unless otherwise specifically provided in such agreement(s), the reproduction of this publication is strictly prohibited. Use and distribution of this publication are also subject to the responsibilities and obligations of such agreement(s), which require confidential treatment of this publication and its contents.

Information in this guide is subject to change without notice and does not represent a commitment on the part of Wolters Kluwer Financial Services.

**Do Not Reproduce or Transmit**

Unless otherwise specifically authorized in the agreement or license under which this publication has been provided, no part of this publication may be posted, played, transmitted, distributed, copied or reproduced in any form or by any means, electronic or mechanical, including photocopying, recording, or retaining on any information storage and retrieval system, without prior written permission from Wolters Kluwer Financial Services.

Requests for permission to reproduce content should be directed to Wolters Kluwer Financial Services, Inc., Corporate Legal Department, by telephone at 1-800-397-2341.

**Not a Substitute for Legal Advice**

This publication is intended to provide accurate and authoritative information about the subject matter covered based upon information available at the time of publication. Examples given in this publication are for illustrative purposes only.

Development of this publication and the software (including forms, disclosures, reports, and other documents generated by the software) or other products that it describes was based on Wolters Kluwer Financial Services' understanding of various laws, regulations and commentaries. Wolters Kluwer Financial Services cannot and does not guarantee that its understanding is correct.

This publication is not intended, and should not be used, as a substitute for legal, accounting, or other professional advice. Wolters Kluwer Financial Services is not engaged in providing legal, accounting or other professional services. If legal or other professional assistance is required, you should seek the services of a competent professional. We encourage you to seek the advice of your own attorney concerning all legal issues involving the use of this publication and any products described in this publication. If your interpretations or your counsel's interpretations are contrary to those expressed in this publication, you should of course, follow your/your counsel's interpretations.

The following notice is required by law:

**WOLTERS KLUWER FINANCIAL SERVICES' PRODUCTS AND SERVICES ARE NOT A SUBSTITUTE FOR THE ADVICE OF AN ATTORNEY.**

**Warranty Disclaimer**

**Except only for the warranties (if any) expressly set forth in the agreement(s) under which this publication is provided (i.e., your agreement or license for the described product), this publication is provided “as is”, and Wolters Kluwer Financial Services makes no warranty, express, implied, by description, by sample or otherwise, and in particular and without limitation, makes no implied warranties of merchantability or fitness for purpose. No modifications to this Warranty Disclaimer are authorized unless in writing and signed by the President or a Vice President of the Wolters Kluwer Financial Services entity licensing the product described in this publication.**

**Attributions and Acknowledgements**

ComplianceOne Solution is a trademark of Wolters Kluwer Financial Services, Inc. All other trademarks are the property of their respective owners.

**Copyright Information**

©2011 Wolters Kluwer Financial Services, St. Cloud, Minnesota

This publication is the confidential information of Wolters Kluwer Financial Services. Distribution of this publication is subject to restrictions in the license or agreement under which this publication is provided to authorized Wolters Kluwer Financial Institution customers.

All rights reserved.

## Table of Contents

<b>Introduction .....</b>	<b>1</b>
<b>Pre-Installation Requirements.....</b>	<b>3</b>
Server Installation Prerequisites - .NET 4 and ASPNET MVC3 .....	3
System Hardware and Operating System Requirements .....	3
Minimum ComplianceOne Release Number .....	3
File Replication .....	3
New or Update Client Installation Prerequisites.....	3
Add Your ComplianceOne Server to Trusted Sites .....	4
Port 80.....	5
Update Installation May Fail with Compressed Databases.....	5
Database on a Different Machine.....	6
Interfaces: Business-to-Business and Core .....	6
Retrieve Information from Gulfpak.ini .....	6
Finding Your SQL Password .....	8
Backup SQL Databases .....	9
Permissions .....	10
Final Steps .....	10
<b>Application Installation .....</b>	<b>10</b>
Server or Standalone Installation.....	11
ComplianceOne Database Installation.....	16
Web Services Installation .....	20
ComplianceOne Server Installation .....	21
Update Client Installation .....	24
Silverlight Installation.....	28
<b>New or Update Client or Terminal Server Installation.....</b>	<b>28</b>
Installation of the Client onto a Terminal Server.....	28
New or Update Client Installation.....	29
<b>Post-Installation Setup .....</b>	<b>37</b>
Verify the Web Service on Windows Server 2003 is Using .NET 4 .....	37
Configure Application Pools on Windows Server 2008 .....	38
Change Server Folder Permissions .....	39
Gulfpak.ini Edits .....	42
Publish Your Organizations .....	43
Re-Enable User Logon .....	44
Update your Index Rate Histories .....	44

<b>Troubleshooting Your Installation .....</b>	<b>46</b>
Incomplete Installation .....	46
Installation Errors Table .....	47
Log Files .....	49
Error Logging and Windows 2008 Server .....	50
<b>Uninstall.....</b>	<b>51</b>
<b>Appendix A: Installing and Configuring .NET 4.....</b>	<b>53</b>
Configuring .NET 4 on Windows Server 2003 .....	53
Configuring .NET 4 on Windows Server 2008 .....	54
<b>Appendix B: Installing ASPNET MVC3.....</b>	<b>56</b>
<b>Appendix C: Configuring IIS v7.0 or Higher .....</b>	<b>57</b>
<b>Support Web Site .....</b>	<b>58</b>
<b>Downloading.....</b>	<b>58</b>
<b>E-Mail .....</b>	<b>58</b>
<b>Phone .....</b>	<b>58</b>
<b>Fax .....</b>	<b>58</b>



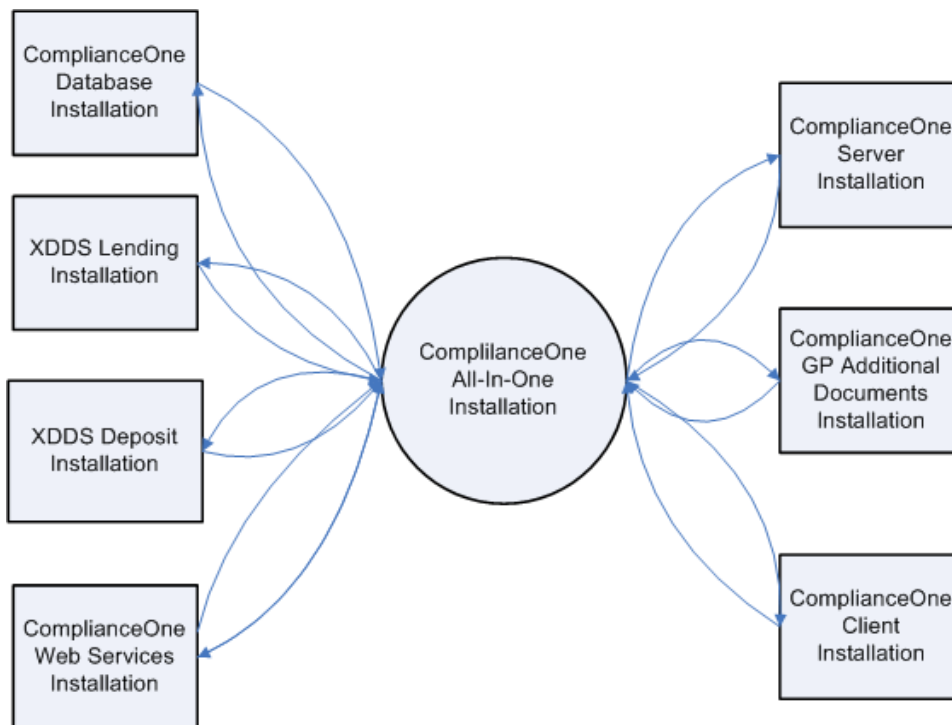


## Introduction

Welcome to the instructions for the update of your existing Release 2011.2 ComplianceOne™ Solution (ComplianceOne) installation to Release 2011.3.

**Note:** These instructions are not usable for brand new installations of ComplianceOne except for installation of the client. Please [contact SupportLine](#) for assistance with a new installation. Also contact SupportLine if your ComplianceOne installation is at a release earlier than 2011.2. This update will not work with releases earlier than 2011.2.

The All-In-One installation will sequentially update all of the components in your existing ComplianceOne installation, interacting with each component to read existing settings and update them accordingly.



These update installation instructions support all ComplianceOne implementations including:

- Standalone
- Single Server and Multiple Clients
- Network: Separate Application and Database Servers and Multiple Clients
- Network: Terminal Services with Single Server

- Network: Terminal Services with Separate Application and Database Servers

These update installation instructions will cover the following topics:

- Pre-Installation requirements
- Application installation, including updating a database on a separate server
- New or update client or Terminal Server installation
- Post-Installation setup
- Troubleshooting your installation
- Uninstall

## Pre-Installation Requirements

Below are a number of items to review before you update your installation of ComplianceOne.

### Server Installation Prerequisites - .NET 4 and ASPNET MVC3

Windows Server 2003 and 2008 both must have Microsoft .NET Framework 4 and ASPNET MVC3 installed and configured prior to upgrading them to ComplianceOne 2011.3. Customers were notified of the new requirement for .NET Framework 4 prior to the release of 2011.3 so you may already have it installed. Both of these applications can be found on your ComplianceOne CD in the Applications\Utilities folder. Installation and configuration instructions for .NET Framework 4 can be found in [Appendix A](#). Installation instructions for ASPNET MVC3 can be found in [Appendix B](#). No configuration is needed for ASPNET MVC3.

### System Hardware and Operating System Requirements

The latest hardware requirements and list of supported Windows operating systems for each implementation of ComplianceOne can be found on the SupportLine web site, <http://support.wolterskluwerfs.com>. Other required software is also listed.

### Minimum ComplianceOne Release Number

This update installation only supports the update of ComplianceOne Release 2011.2 to Release 2011.3. To determine the ComplianceOne release you have installed, launch administration and note the version number in the lower right corner of the logon window.

### File Replication

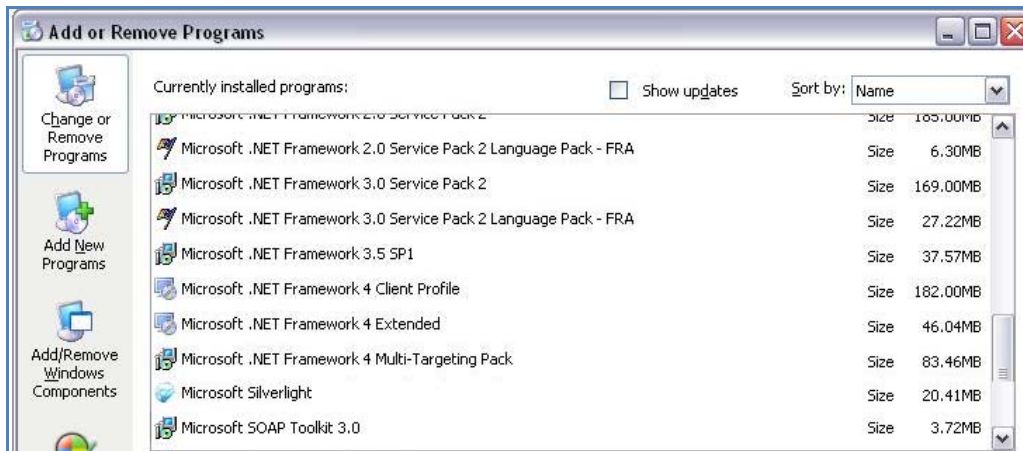
If you have file replication enabled on any of your ComplianceOne servers, you will need to disable the file replication before performing the update to this release. Once the update has successfully completed, you can re-enable file replication.

### New or Update Client Installation Prerequisites

All computers selected for new or update client installation must have the following prerequisite software installed before installing the update:

- SOAP 3.0
- Microsoft .NET Framework 2.0
- Microsoft .NET Framework 4
- Microsoft Silverlight

To determine if you have these applications installed, open Control Panel and select Add or Remove Programs. The applications should be listed.

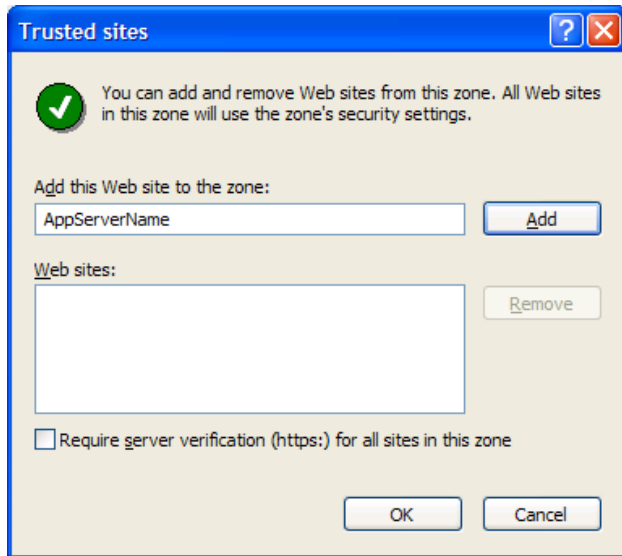


Note that if any are not listed, you will need to install them before installing or updating the ComplianceOne client. These applications can be found on your ComplianceOne CD in the Applications\Utilities folder.

## Add Your ComplianceOne Server to Trusted Sites

You will need to add your ComplianceOne application server's name and IP address into Trusted Sites in Internet Explorer:

1. From the menu, select **Tools, Internet Options**.
2. On the Security tab, choose **Trusted Sites** and click the **Sites** button.
3. Type the computer name of your ComplianceOne server into the **Add this Web site to the zone** field and click **Add**.



4. Repeat to also add the IP address of your ComplianceOne server.
5. Click **OK** until you return to your browser.

This should only have to be done on servers and workstations where the ComplianceOne client is used. Note that this is a per user setting, so it has to be added per user or with a Domain Policy.

## Port 80

Web sites deployed on the same server as ComplianceOne and using port 80 will not function properly and also interfere with the functioning of the Expere DDS web service portion of ComplianceOne. As such, we do not currently support deploying ComplianceOne onto web servers where other sites are configured to use port 80. We also do not currently support deploying ComplianceOne onto web servers that are running Microsoft SharePoint.

## Update Installation May Fail with Compressed Databases

The update installation of ComplianceOne will fail at the database installation step if you have compressed any or all of the earlier ComplianceOne databases present on your ComplianceOne or database server. Earlier databases include those from several releases past, such as Release 2.0.3.

You will receive the following error if you have compressed, earlier databases:

InstallShield Wizard Completed. The wizard was interrupted before ComplianceOneDatabase could be completely installed. Your system has not been modified. To complete installation at another time, please run setup again.

When you click Finish, you get the generic 1722 error.

You will need to decompress your earlier databases and repeat the update installation.

## Database on a Different Machine

If your institution hosts your ComplianceOne databases on an SQL server separate from the one containing your ComplianceOne application, the databases must be functioning correctly with the ComplianceOne 2011.2 release before applying this update. Note that when you apply this update you will need to do two installations: first, an installation at your database server to update your databases and a second installation at your ComplianceOne application server. Each time you will choose the Custom option as detailed later in these instructions.

**Important:** The database server update must be performed first before updating the ComplianceOne application server. All updates must be done machine-side; do not do installations remotely.

If you currently have your ComplianceOne application and databases installed to the same server machine and you want to change your configuration to host your databases on a separate server, the databases must be moved prior to updating your ComplianceOne installation to 2011.3. Please contact SupportLine at 1-800-274-2711, X123211 for help with this major configuration change.

If you move the databases, you should test your reconfigured ComplianceOne Release 2011.2 installation for full functionality before proceeding with this update.

## Interfaces: Business-to-Business and Core

If you are using any business-to-business, B2B, or core interfaces on your current ComplianceOne installation, do not change the installation path for the application during installation. If the path is changed your B2B and core interfaces will no longer function.

### Retrieve Information from **Gulfpak.ini**

If you use a core or B2B interface on your ComplianceOne installation, before performing the update, you will need to review a configuration file named **gulfpak.ini** to determine if several lines have values associated with them. If so, you will need to save a copy prior to the product update install and restore those values into the **gulfpak.ini** created by the update installation.

To review and save the **gulfpak.ini** file from your current 2011.2 installation:

6. Browse to C:\Program Files\ComplianceOne, if you used the default installation path, and open **gulfpak.ini** in Notepad. Your file should look similar to this sample.

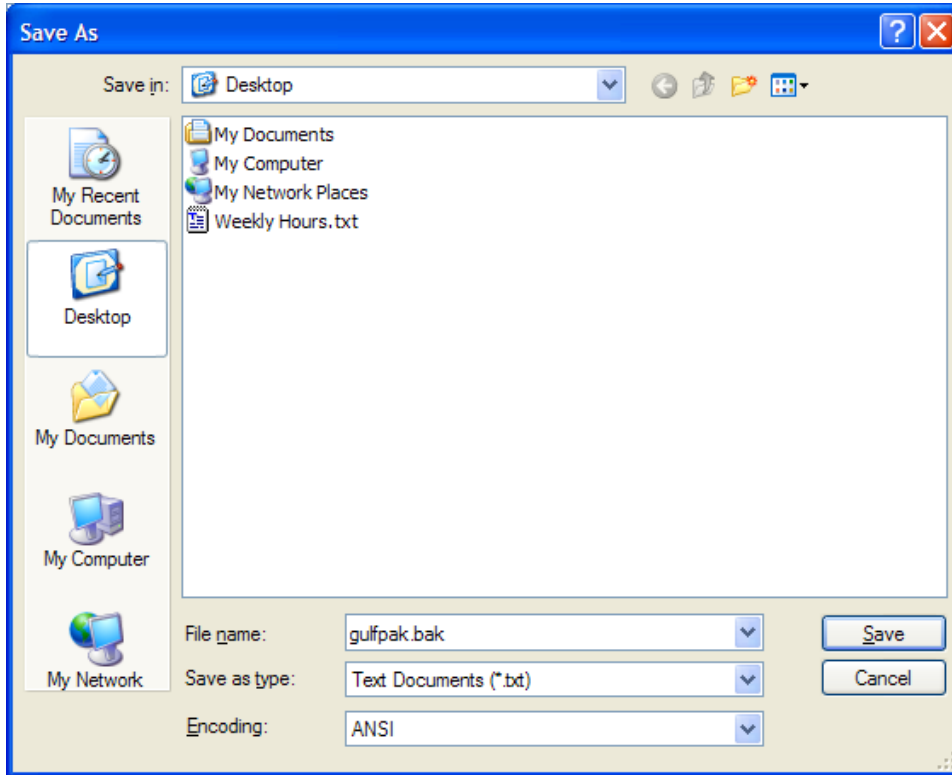
```
[GULFPAK]
USERDBNAME=C1_USER_2_3_0_2730
DATABASETTYPE=SQL
SINGLEPRINTJOB=TRUE
IGNOREWKUPDATE=FALSE
RETRYFAILEDSQLCONNECTION=TRUE
CONNECTION=Provider=SQLOLEDB;Network Library=DBMSOCCN;Data Source=
Server\COMPLIANCEONE;User ID=CONE;PWD=Complianceone_#01;Initial Catalog=
@DBNAME
SUNTELLPATH=
SQLCASESENSITIVE=FALSE
ALTERNATEUNITPERIODODDDAYS=TRUE
FINANCEODDDAYOPTION=TRUE
INTERCEPTPATH=
XMLPATH=
CALYXPATH=
DEFAULTLOANSPATH=
DEFAULTDEPOSITSPATH=
REMITTANCE=FALSE
ONEPOINT=
SIGNATUREHEIGHT=0.5
SIGNATUREWIDTH=2.5
PCIWIZSENTINELURL=
https://www.wizsentinel.com/PLMDetailXML/PLMXMLLogin.asp?Event=PLMXML\_LOGIN
PCIWIZBASICVENDORID=5A2FDC9E-3A97-4A8B-9F3F-24A08E3DCBEC
SIGNATUREEXT=BMP
PCIFLOODWIZURL=https://www.floodwiz.org/WizServer2/MismoProcess.asp
RELEASEVERSION=2.3.0.2730
USERDEPATH=
```

7. You will need to note if any values are associated with any of the 4 following lines:

- INTERCEPTPATH=
- XMLPATH=
- CALYXPATH=
- SUNTELLPATH=

8. If each of the four lines is blank, you can stop here and close Notepad and ignore the remaining steps in this section. You do not need to save a backup copy of **gulfpak.ini**.

9. If you see any value listed after the equals sign for one or more of these lines, you will need to save a copy of your **gulfpak.ini** file to your desktop using **File, Save as** in Notepad. Save the file as **gulfpak.bak**. Notepad will append txt to the filename so the actual filename on the desktop will be **gulfpak.bak.txt**. During post installation you will need to have both this file and the new **gulfpak.ini** file open at the same time to perform copy-and-paste and you will need a different filename to distinguish between the open file windows.



10. After completing your ComplianceOne update, follow the detailed instructions for copying values from your backed up file into your new **gulfpak.ini** as shown in the [Post-Installation Setup section](#) of this document.

## Finding Your SQL Password

In order to install this release, you will need to know the SQL login name and password being used to run ComplianceOne. Prior to this release, when SupportLine performed your installation, an SQL login name and password was chosen for your ComplianceOne SQL instance. This information can be found in the **gulfpak.ini** file, located in the root of your ComplianceOne directory. The login name and password are located in the line titled Data Source=. The user name is located after User ID= and the password is located after PWD=.

```
[GULFPAK]
USERDBNAME=C1_USER_2_3_0_2730
DATABASETYPE=SQL
SINGLEPRINTJOB=TRUE
IGNOREWKUPDATE=FALSE
RETRYFAILEDSQLCONNECTION=TRUE
CONNECTION=Provider=SQLOLEDB;Network Library=DBMSOCCN;Data Source=
Server\COMPLIANCEONE;User ID=CONE;PWD=Complianceone_#01;Initial Catalog=
@DBNAME
SUNTELLPATH=
SQLCASESENSITIVE=FALSE
ALTERNATEUNITPERIODODDDAYS=TRUE
FINANCEODDDAYOPTION=TRUE
INTERCEPTPATH=
XMLPATH=
CALYXPATH=
DEFAULTLOANSPATH=
DEFAULTDEPOSITSPATH=
REMITTANCE=FALSE
ONEPOINT=
SIGNATUREHEIGHT=0.5
SIGNATUREWIDTH=2.5
PCIWIZSENTINELURL=
https://www.wizsentinel.com/PLMDetailXML/PLMXMLLogin.asp?Event=PLMXML_LOGIN
PCIWIZBASICVENDORID=5A2FDC9E-3A97-4A8B-9F3F-24A08E3DCEBC
SIGNATUREEXT=BMP
PCIFLOODWIZURL=https://www.floodwiz.org/WizServer2/MismoProcess.asp
RELEASEVERSION=2.3.0.2730
USERDEFPATH=
```

Before you upgrade, you can change the password which was assigned to the login if you would like to do so.

**Warning!** Changing the password at any time other than immediately before you perform the upgrade will result in your current ComplianceOne installation not functioning properly.

## Backup SQL Databases

Even though the installation is designed to leave your existing databases intact, we highly recommend that you backup your existing ComplianceOne databases before you install this update.

**Note:** The online books for SQL Server 2005 and SQL Server 2005 Express are available at <http://www.microsoft.com/downloads/details.aspx?FamilyID=be6a2c5d-00df-4220-b133-29c1e0b6585f&displaylang=en>. Links to books for other SQL Server releases are also available at this location.

A brief set of instructions for locating and using the backup functionality in SQL Server or SQL Server Express is located in the *Backup and Restoration Guide* available on the [Wolters Kluwer](#)

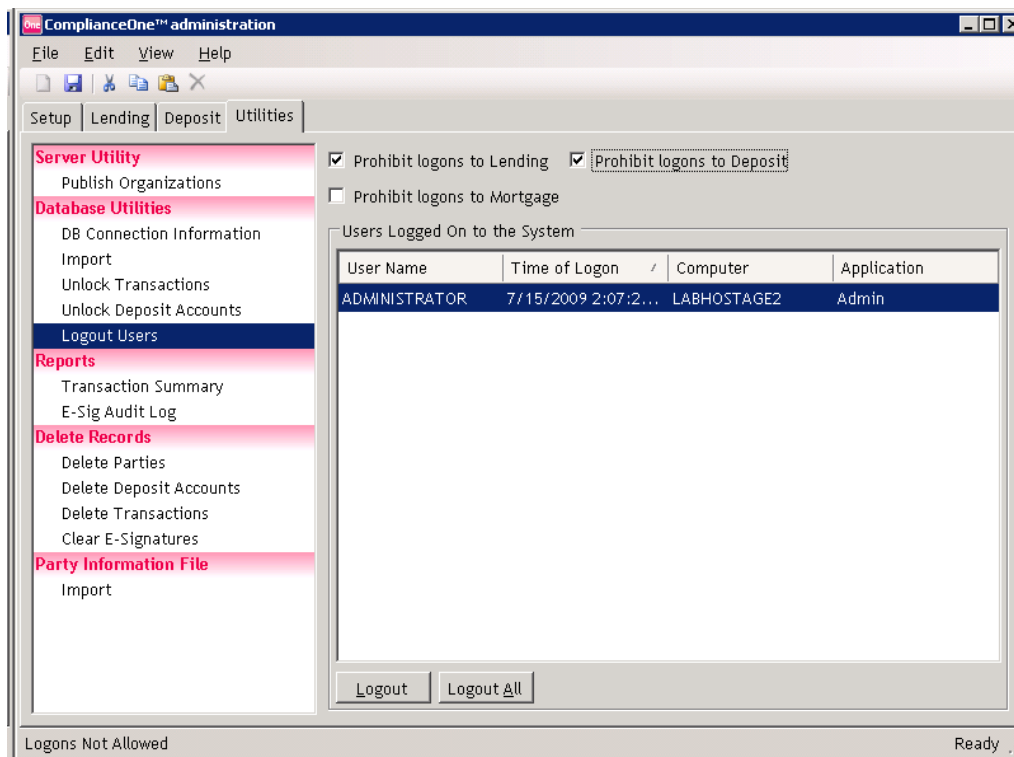
[Financial Services Support Web site](#). Please consult the procedures and standard operating procedures in place at your financial institution for backing up databases before proceeding.

## Permissions

You will require administrative rights to any machine receiving all or any part of this update to complete the install.

## Final Steps

No one should be using ComplianceOne during the update installation. You can ensure this by opening administration, Utilities, Logout Users. Select the Prohibit logons check box for Lending and Deposit. Make sure all users are logged out.



Before beginning the update disable your anti-virus application.

## Application Installation

Note that there is not a separate installation for a standalone or workstation configuration for ComplianceOne. If you wish to use ComplianceOne in a standalone configuration, select the

**Complete** installation and use the machine as a workstation. The client install is included when you do a **Complete** installation.

If you are hosting your ComplianceOne databases on a separate server from the application, you must run the database installation on the database server machine first. All other components must then be installed onto the ComplianceOne server after the completion of the database installation.

For a Terminal Services installation, we recommend that you install only the client onto the Terminal Services server. Proceed to the [New or Update Client or Terminal Server Installation](#) if you are installing to a Terminal Services server.

**Note:** If you currently have a complete ComplianceOne installation on your terminal server that you wish to update to 2011.3, follow the instructions for a complete install of the ComplianceOne application rather than doing a client-only install.

## Server or Standalone Installation

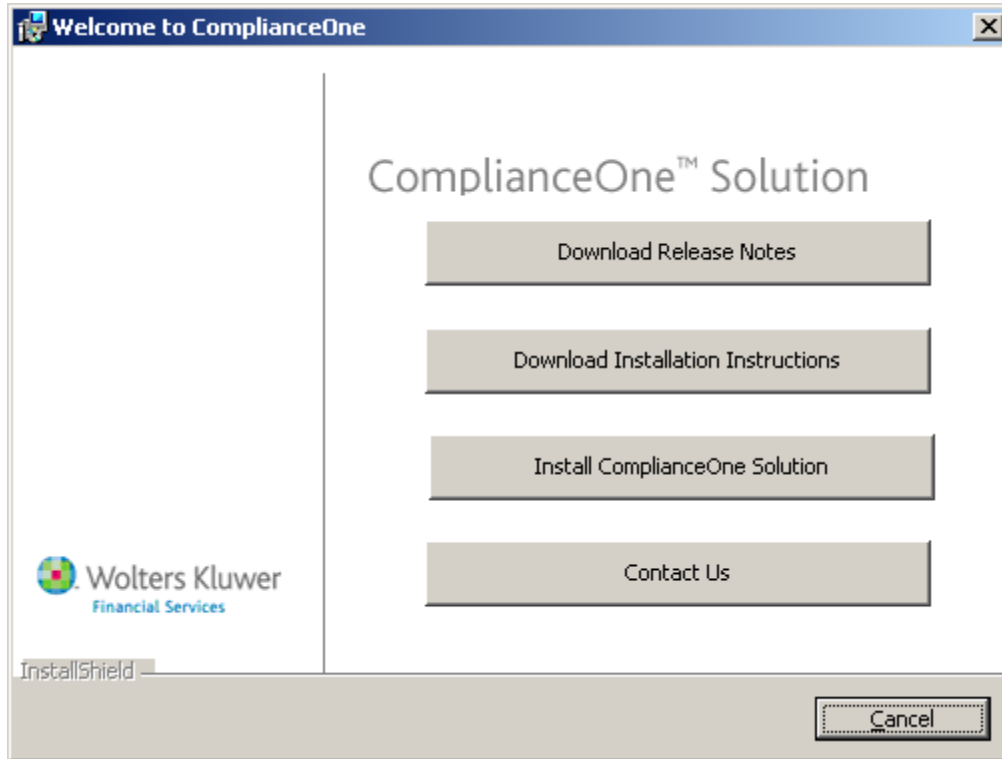
After completing the pre-installation instructions, you can begin the installation of the Release 2011.3 ComplianceOne update. Instructions are also included if you are hosting your ComplianceOne databases on a separate SQL server.

**Note:** This installation cannot be done remotely but must be completed machine-side.

1. Place the ComplianceOne CD into the CD-ROM drive of the computer that will receive the installation. Browse to the root of the CD and double-click **setup.exe**.

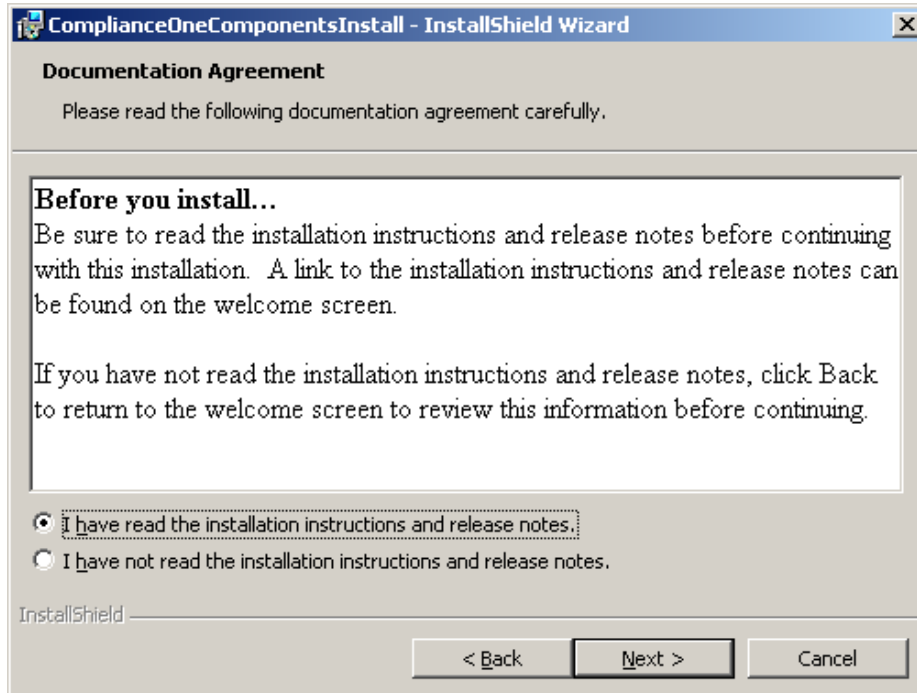
**Note:** If you are installing onto Windows Server 2008 32 bit, Windows Server 2008 R2 64 bit or Windows 7 Professional 32 and 64bit, rather than double-clicking **setup.exe**, you will need to right-click on the file name and select **Run as Administrator** from the context menu. You will also need to do this for client installations.

2. The ComplianceOneComponentsInstall window will display followed shortly by the installation Welcome window. Note that the ComplianceOneComponentsInstall window will stay open in the background through the entire installation update.

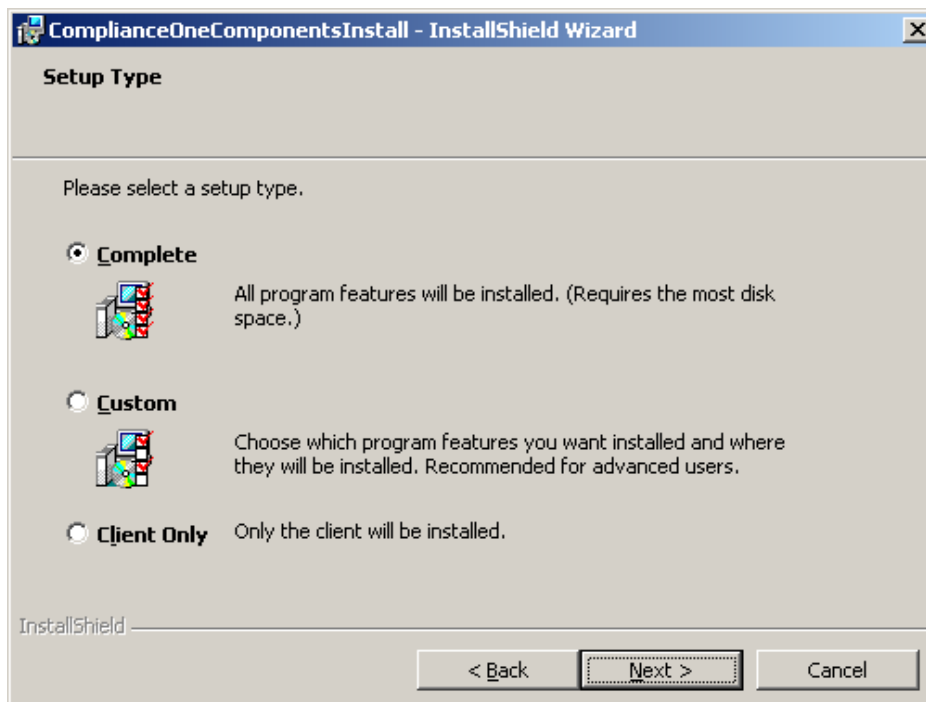


The installation instructions and the release notes are both linked from this screen. Please open and read each document before proceeding with the installation. If you have any questions at this point, you can click **Contact Us** for mailing, phone, fax, and Web-based contact options. When you are ready to continue the installation, click **Install ComplianceOne Solution**.

3. To proceed with the installation you must agree to the Documentation Agreement that you have read the release documents.

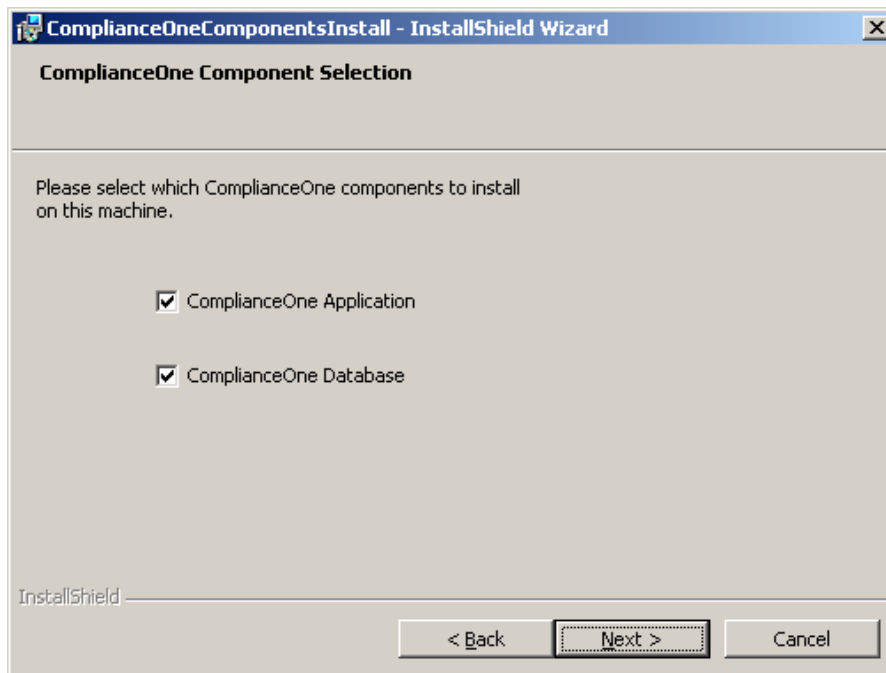


4. If you have not read the Release Notes or these installation instructions, please stop and do so. Select **I have read the installation instructions and release notes**. Click **Next**.
5. Select the Setup Type for your installation.



Each selection will give you a different installation path:

- **Complete.** This choice will update all of the ComplianceOne components for either a server or standalone installation onto your computer. This is the recommended choice.
- **Custom.** The most common use for this choice will be if your institution hosts the ComplianceOne application on one server and the ComplianceOne databases on another. If you choose Custom, you will have the option to update the application only or the database only on their respective machines. Note that will need to perform the installation from the update CD twice, first on the database server and again, taking the CD to the application server and updating the application there. Both times you will use the Custom choice but clear different checkboxes.



If you select **ComplianceOne Database**, only the ComplianceOne databases will be installed as described in the [Database installation section](#) in this document.

**Important:** You must update your database server first before updating your application server.

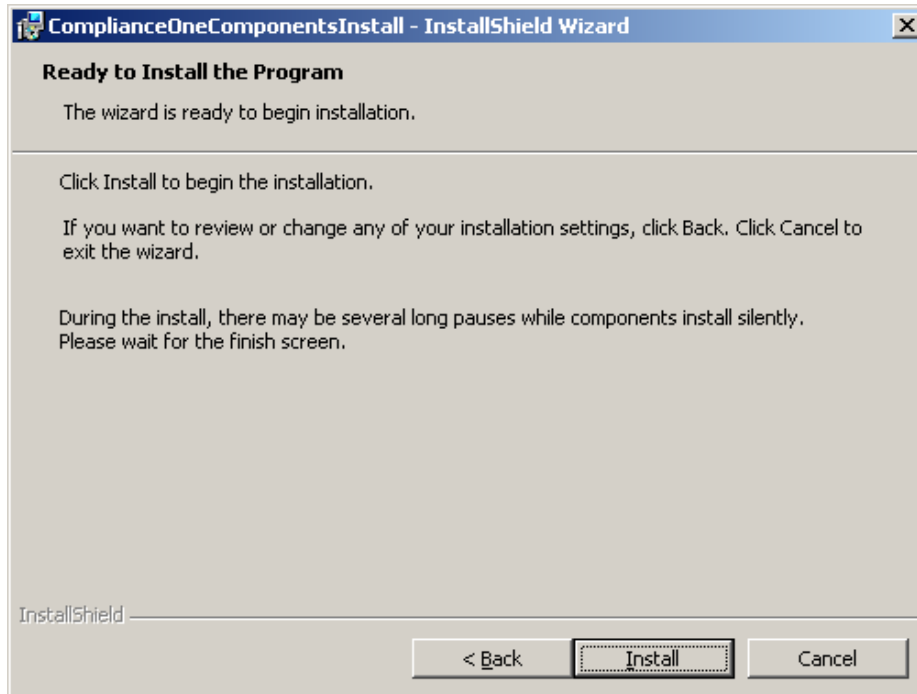
If you select **ComplianceOne Application**, everything except the ComplianceOne databases will be installed.

- **Client.** This option lets you install the client only to machines other than the server when you are using ComplianceOne in a server/client implementation. You will need to install the client on each machine you wish to use to access the ComplianceOne server. Also use the client installation when you are installing ComplianceOne onto a Terminal Server. Detailed instructions for installing the client can be found in the [New or](#)

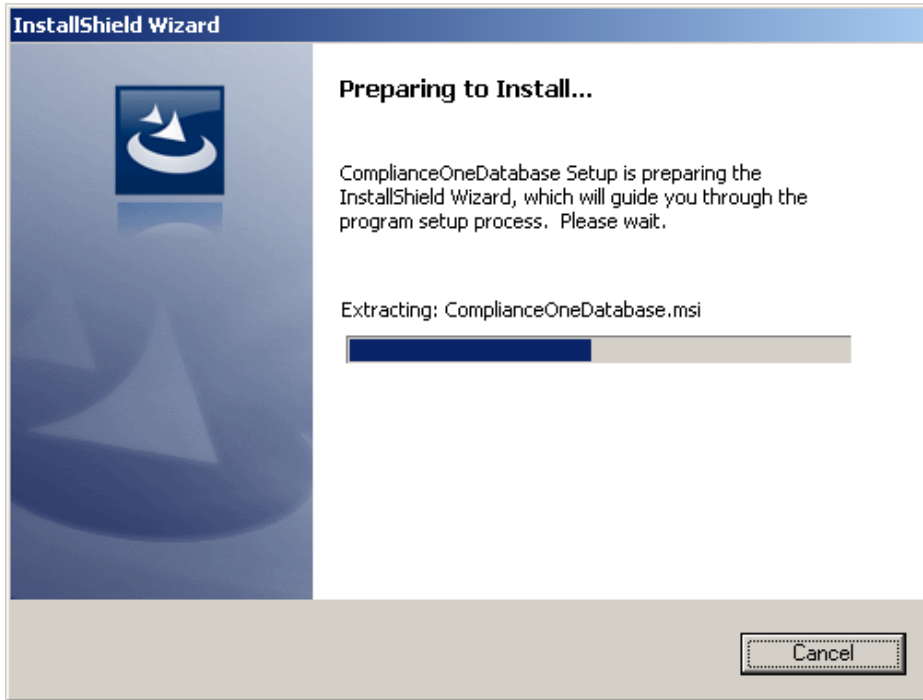
[Update Client or Terminal Server Installation](#) section of these instructions. This installation choice can be used to update an existing client or to install the client on a new machine.

**Note:** The remainder of the steps below follows the Complete installation pathway with a few notes for those performing the Custom installation.

6. After selecting Complete and clicking **Next**, you are ready to update your installation of ComplianceOne.



7. Clicking **Install** begins the installation process. At the beginning and throughout the installation, you will be able to follow progress using the installation status screens.



Components will be installed in the following order:

- ComplianceOne databases
- Web services including Expere DDS Lending, Expere DDS Deposit and ComplianceOne Web Services
- ComplianceOne Server
- Client

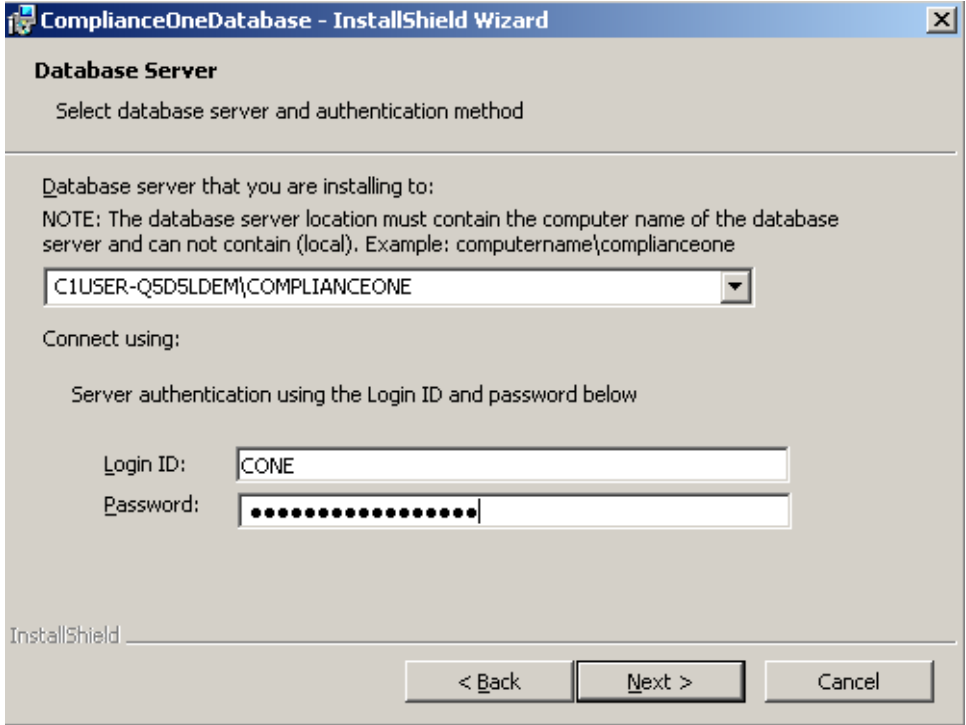
## ComplianceOne Database Installation

**Note:** If you are doing a Custom install to update a separate database server, that is, only the **ComplianceOne Database** checkbox has been selected, your installation will begin here.

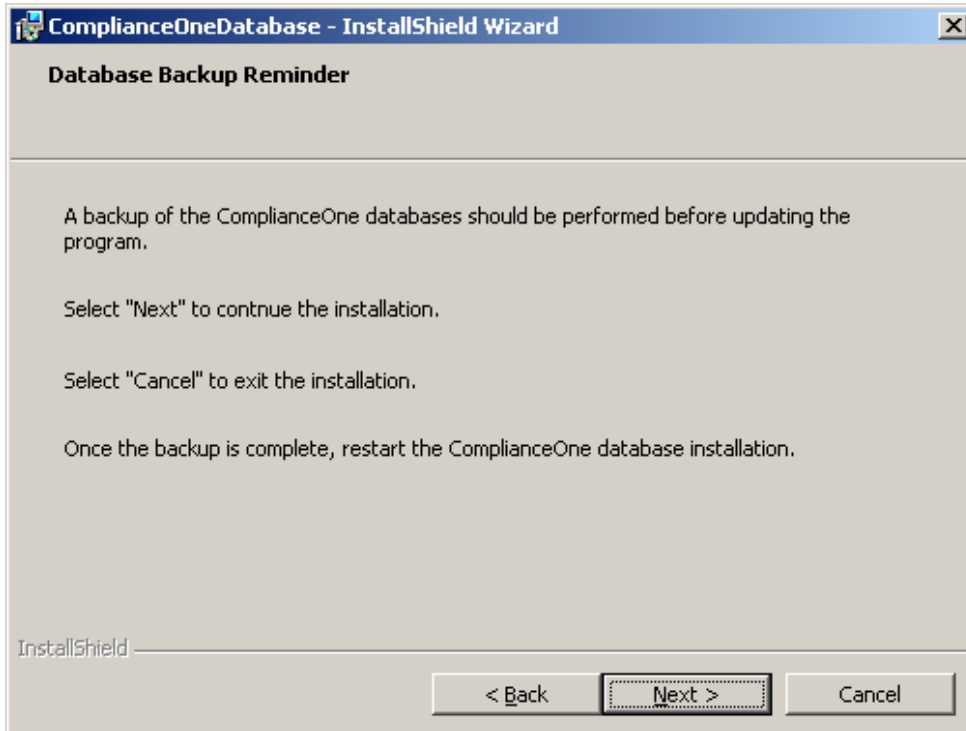
The Complete installation continues from the previous **Preparing to Install** window.

1. The database installation begins with a Welcome window. Click **Next**.
2. Since this is an update installation, the name and location of the database server will default to the instance used in the last release. The dropdown option will display all available SQL database instances on your local machine. You will also need to enter your SQL login credentials. The SQL login **CONE** will default into the Login ID box. Windows authentication for SQL Server login is not supported in ComplianceOne at this time.

**Note:** Using localhost is not an acceptable address for your database server. Please choose a computer name or use an IP address.



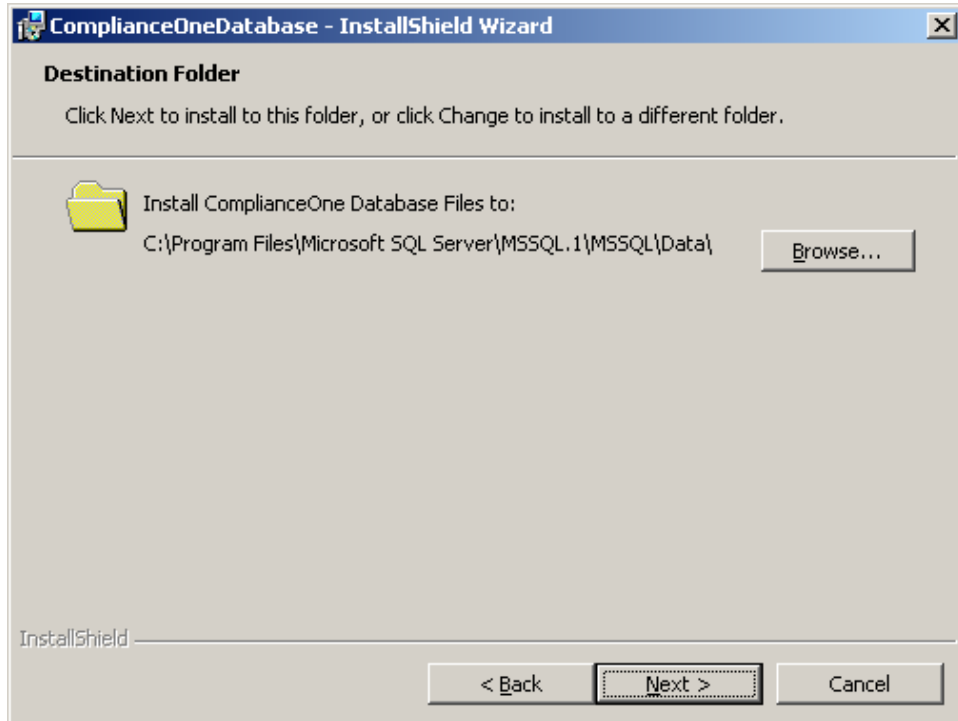
3. When you click **Next**, the installation will verify your database location and login credentials. If any of the verifications fail you will receive an error notification. If you receive an error you can find more detail in the [error table](#) later in this document.
4. If all verifications are successful, before proceeding with the install, you will be prompted to backup your ComplianceOne databases.



If you have not already backed up your databases, you can do so now without exiting the ComplianceOne installation. A brief set of instructions for locating and using the backup functionality in SQL Server or SQL Server Express is located in the *Backup and Restoration Guide* available on the [Wolters Kluwer Financial Services Support Web site](#).

Once your database is backed up, you may return to this window and click **Next** to proceed with your ComplianceOne update installation.

5. The ComplianceOne database file location will default to the value from your earlier 2011.2 release.

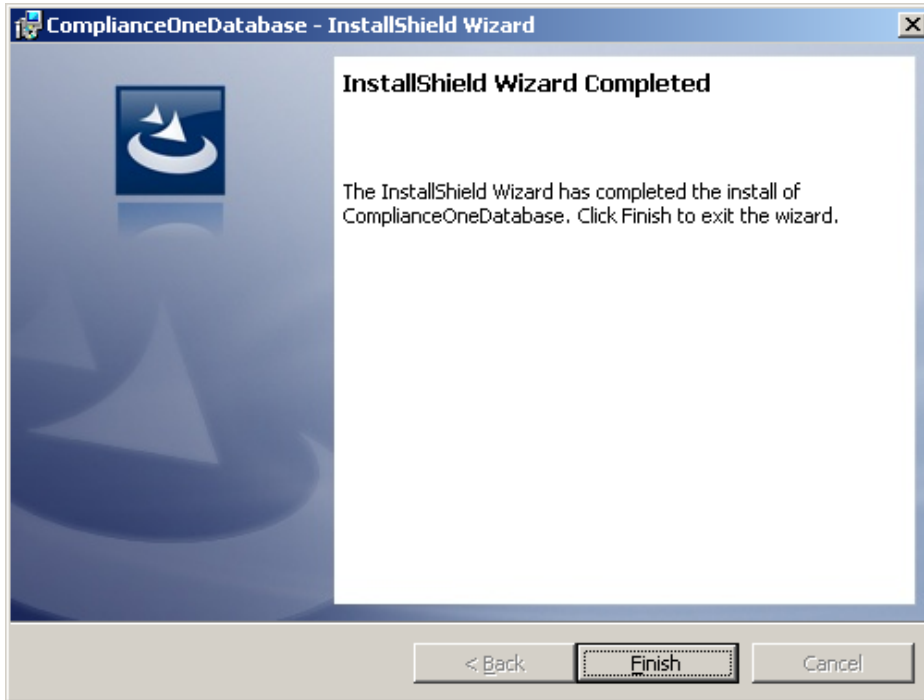


Click **Next**.

6. You are now ready to begin the database installation. Click **Install** to continue. Progress bars will keep you abreast of the status of the update.

During the migration process the database update will extract the data from each of your existing ComplianceOne databases and place it into a new ComplianceOne database. Your existing 2011.2 databases will remain in place as they had prior to executing the 2011.3 database update.

7. You will be notified when the database update is complete.



Click **Finish** to continue to the Web services installation phase of your ComplianceOne update.

**Note:** If you are doing a Custom install to update a separate database server, your database update is completed here. Take your ComplianceOne CD and proceed to your ComplianceOne application server and begin the installation once more at that machine. Choose the Custom install, that is, only the **ComplianceOne Application** checkbox has been selected. Your installation will begin with the Web services update as detailed next.

## Web Services Installation

Three components are installed for Web services:

- Expere DDS Deposit
- Expere DDS
- Web services

Expere DDS Deposit is installed first, followed by Expere DDS Lending, and finally by Web services.

---

**Note:** During the installation process Microsoft Internet Information Server (IIS) will be stopped and restarted automatically. This might impact any other application using IIS during the upgrade process.

---

1. The update installation will first verify the Web services installation from your 2011.2 release. If any of the verifications fail you will receive an error notification. You can find more detail about each error type in the [error table](#) later in this document.

2. You will be Welcomed to the Web services installation and then the Web services update will immediately begin with the installation of Expere DDS Deposit.
3. Expere DDS is installed next. Expere DDS is the name of the Web services used by ComplianceOne to publish documents and is a critical part of the ComplianceOne installation and must always be installed.

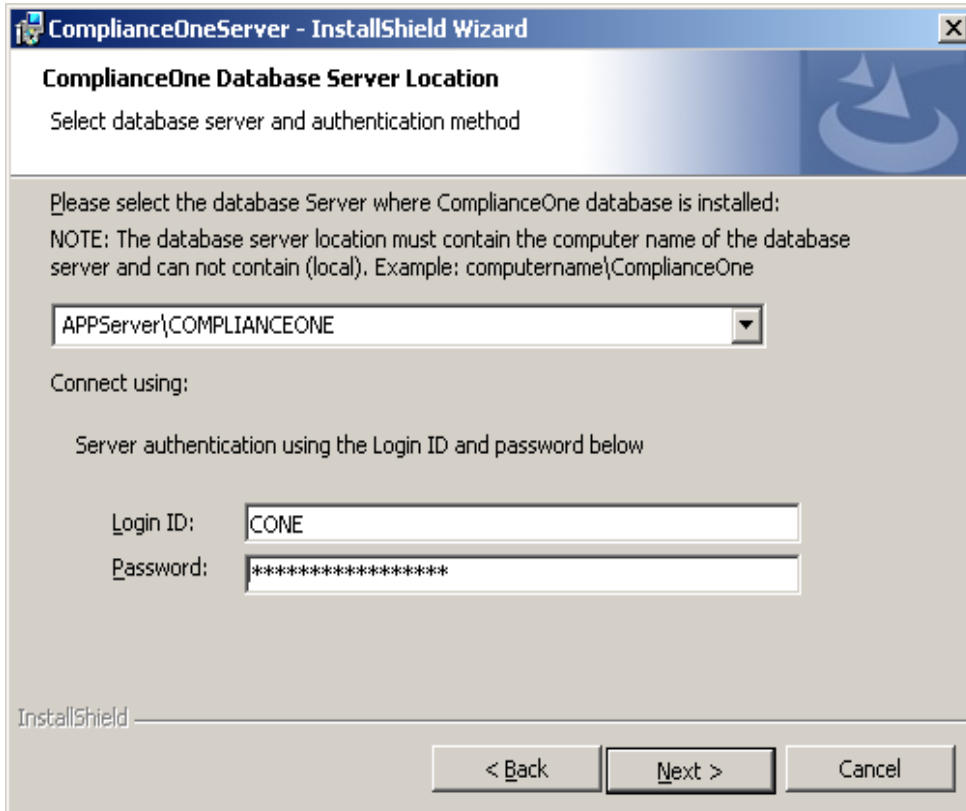
**Note:** The installation must uninstall the current version of Expere DDS before installing the updated version.

4. The Web services installation completes silently. The product update install will next proceed to the ComplianceOne server update portion of the installation.

## ComplianceOne Server Installation

1. The update installation will first verify the server installation from your 2011.2 release. If any of the verifications fail you will receive an error notification. You can find more detail about each error type in the [error table](#) later in this document.
2. If the correct server version is detected, you will be Welcomed to the server installation. Click **Next** to begin the server update. Note that there may be a short pause while the install initializes.
3. The database server location will default to the SQL instance you used for 2011.2. The dropdown listbox will list all SQL instances available on your local machine.

**Note:** Using localhost or any value with 'local' in its name is not an acceptable address for your database server. Use a computer name or an IP address.



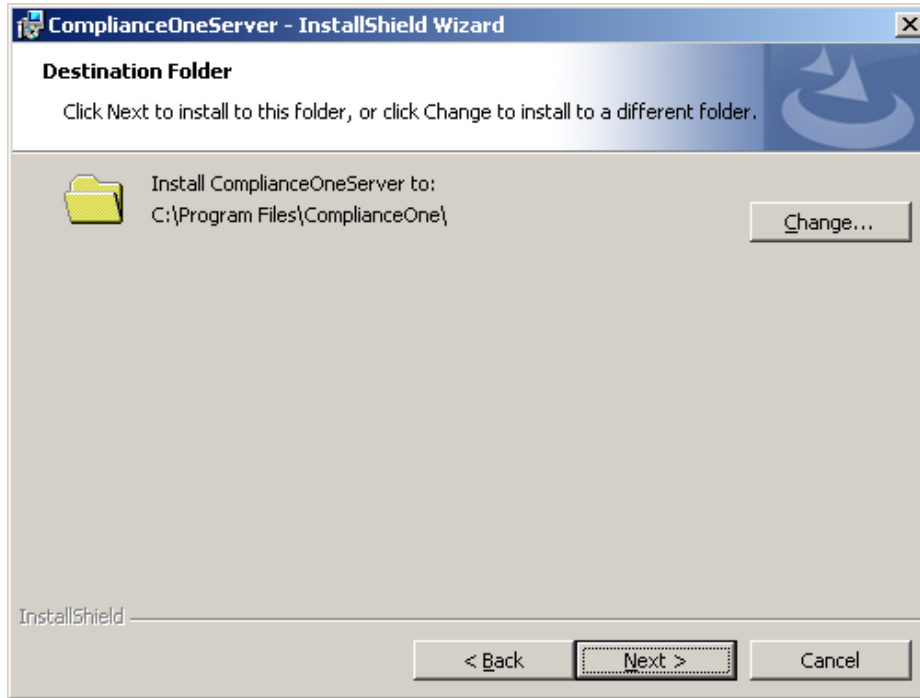
You will also need to enter your SQL login credentials. Click **Next**.

4. The installation will try to connect to the ComplianceOne SQL server instance. If it is unsuccessful, an error message will be returned. Details on errors can be found in the database section of the [error table](#).
5. If the SQL connection was successful, the server installation will next display the address of your ComplianceOne Web services server, again, defaulting to the server name or IP address you used for 2011.2. If necessary, edit this information to state the installation computer name.



Click **Next**.

6. The installation will verify the address of your Web services. If any difficulties are encountered, you may see one of the errors in the [error table](#).
7. Once the Web services location has been verified, the destination path for your ComplianceOne server installation will default from your earlier release.



**Note:** Do not use **Change** to browse to a new installation path. Any business-to-business or core interfaces that you use will no longer work. Also, if you use any custom forms purchased from us, they will need to be reinstalled.

Click **Next** to continue.

8. Your server is now ready to install. Click **Install** to proceed.
9. Click **Finish** after the server install to proceed to the client installation.

## Update Client Installation

**Note:** If you are doing a new client installation, that is installing a client on a machine that has not received a client installation before, or if you are installing the client onto a Terminal Server, please see the [New Client or Terminal Server Installation](#) section of this guide.

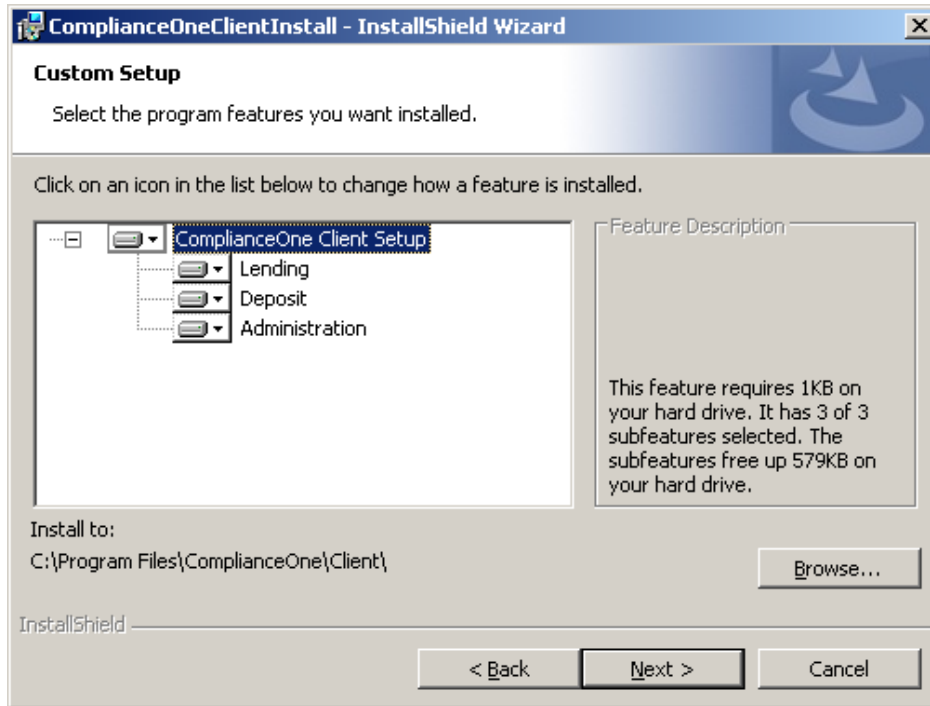
To continue with the client update installation portion of the Complete install on the application server:

1. The installation will determine the status of any client currently installed on your system. If any of the verifications fail you will receive an error notification. You can find more detail about each error type in the [error table](#) later in this document.

2. The installation program will check for the presence of Silverlight™ 4.0. If it is missing you will be prompted to install it. Otherwise, you will begin the client installation at the Welcome window. Click **Next**.

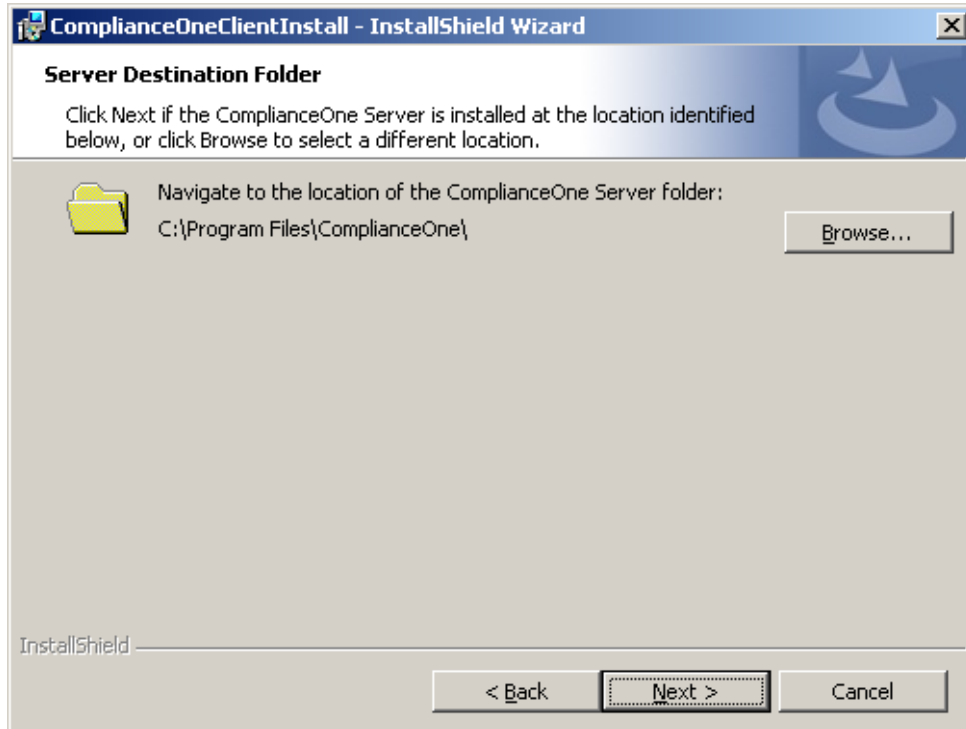
For more information about installing Silverlight 4.0 see page [28](#) of these instructions.

3. Select one or more of the types of clients to install. All types you selected for Release 2011.2 are selected by default. If you do not want to install a particular client type, click the down arrow next to the client name and choose **This feature will not be available**.



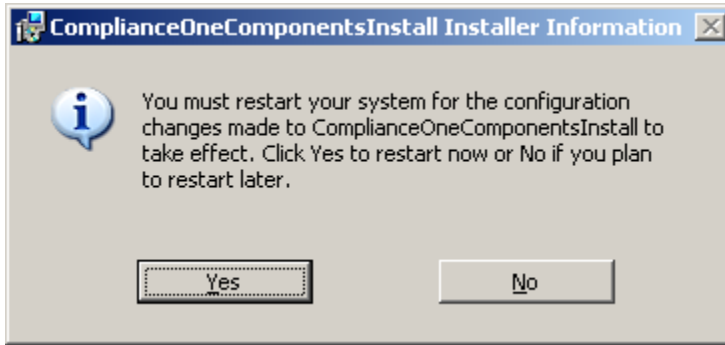
The install path will default from 2011.2 and is the recommended install path. Click **Next** to continue.

4. The path listed for the ComplianceOne server location will be the path you selected in Release 2011.2.

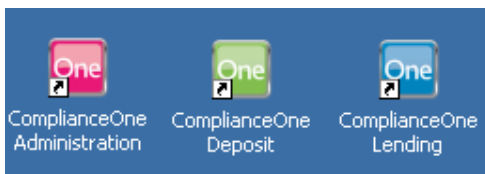


Click **Next** to continue.

5. The installer will confirm the location of the server before continuing. If any difficulties are encountered, you may see a server error listed in the [error table](#).
6. If no difficulties are encountered, you will see the Client Ready to Install window. Click **Install** to begin the installation of the client.
7. Progress of the installation can be followed on your screen.
8. The Installation Completed window displays when the client installation has completed. Click **Finish** twice, once to end the client installation and again to complete the All-in-One Component installation.
9. You will be notified that your machine must be rebooted before ComplianceOne can be used. Click **Yes** to restart your machine. If you click **No**, the installation will end but do not use ComplianceOne without a reboot.

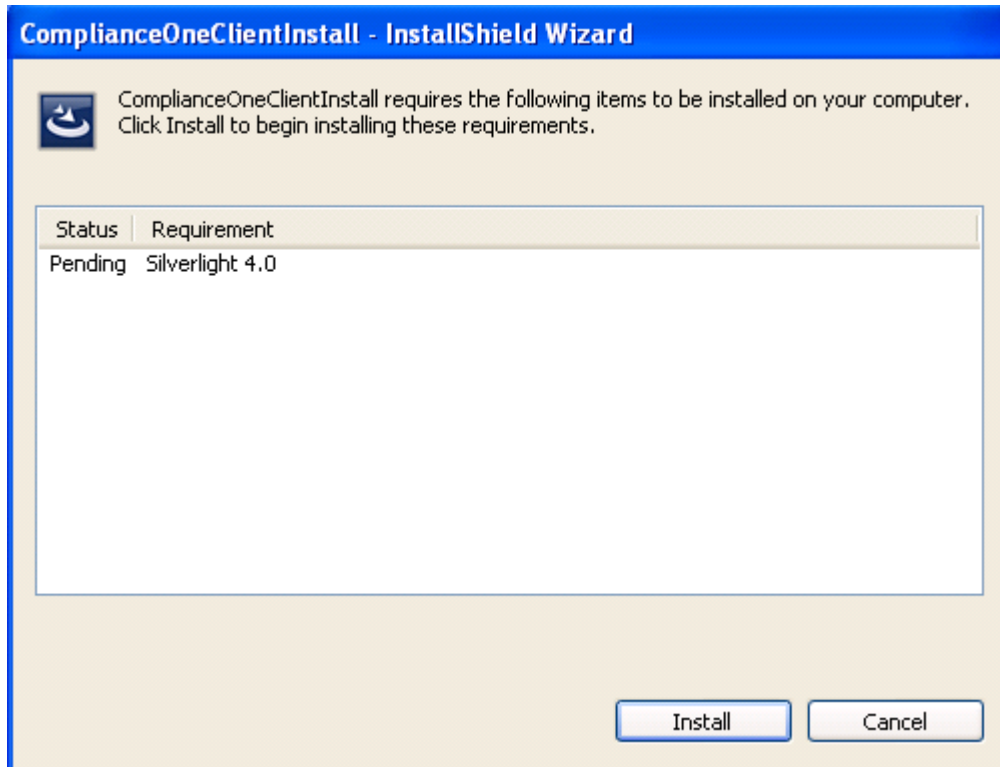


10. After reboot, note the text of the icons on your desktop has changed:



## Silverlight Installation

Microsoft Silverlight™ is included with the ComplianceOne update installations in case your system does not already have it. If the the ComplianceOne installation program does not find Silverlight on your system, the following screen will display:



Click **Install** to install Silverlight. Note that a reboot is not required after the Silverlight installation.

After the installation of Silverlight, you will begin the client installation at the Welcome window. Click **Next** and continue with step 3 on page [25](#).

## New or Update Client or Terminal Server Installation

Use these instructions when you are installing the ComplianceOne client onto a Terminal Server, when you update an existing client, or when you are installing a new client.

### Installation of the Client onto a Terminal Server

If you are installing to a Terminal Server, after insuring the server is not in use, you will first need to set the server into Install Mode before installing the client.

1. From your Terminal Server select Start, Run and type **CMD** then click **OK**.
2. At the command prompt, type the following:

```
Change User /Install
```

3. Press **Enter**.

Proceed with the new or update client installation instructions. When the installation is complete, restart the server. After the restart Terminal Server will be in Execute mode.

## New or Update Client Installation

All computers selected for new or update client installation must have the following prerequisite software installed prior to the client installation: SOAP 3.0, Microsoft .NET Framework 2.0, .NET Framework 4, and Silverlight. These applications, if installed, are listed in Control Panel, Add or Remove Programs. You can find more detail [earlier in this document](#) if you are uncertain how to check for the presence of these applications before proceeding with the client new or update installation.

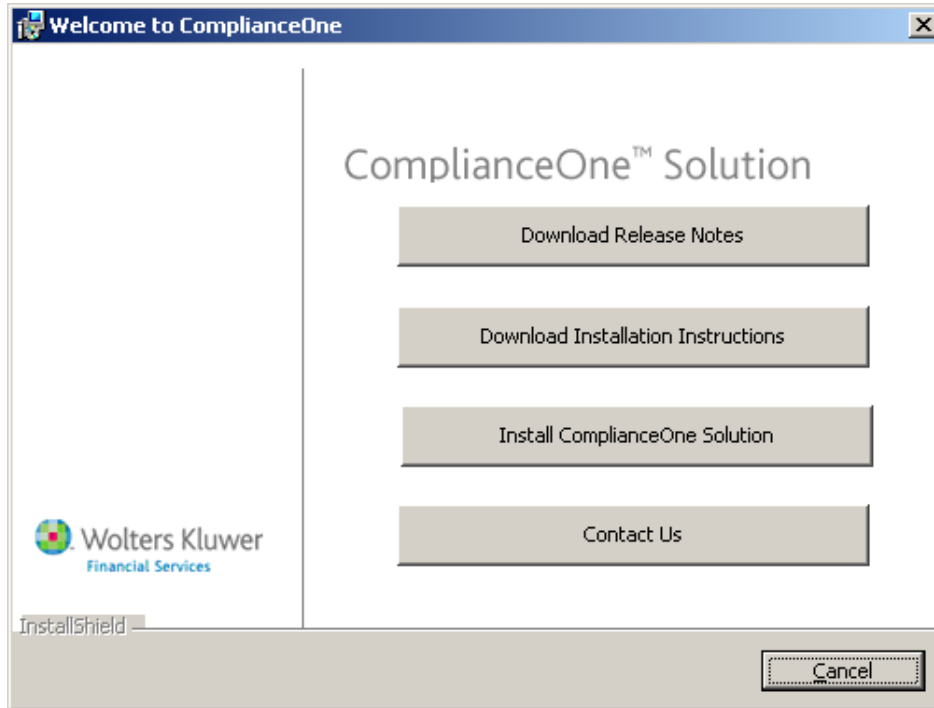
If you are installing a client on a new machine or updating an existing 2011.2 client:

1. Place your ComplianceOne CD into the CD-ROM drive of the computer that will receive the client installation. This installation cannot be done remotely but must be completed machine-side.

**Note:** The client installation can also be performed by navigating with Windows Explorer to the Client\_Install folder on your ComplianceOne server and double-clicking **ComplianceOneClientSetup.exe**. If you are installing onto Windows Server 2008 32 bit, Windows Server 2008 R2 64 bit or Windows 7 Professional 32 and 64bit, rather than double-clicking the .exe, you will need to right-click on the file name and select **Run as Administrator** from the context menu. If your ComplianceOne server is mapped to a drive, the exe can be found at <drive>:\Program Files\ComplianceOne\Client\_Install where <drive> is the mapped drive letter. If your ComplianceOne server is not mapped to a drive, then you can type a UNC address into the address bar of Windows Explorer, for example, \\ComplianceOneServerName\ShareName where ShareName is usually ComplianceOne.

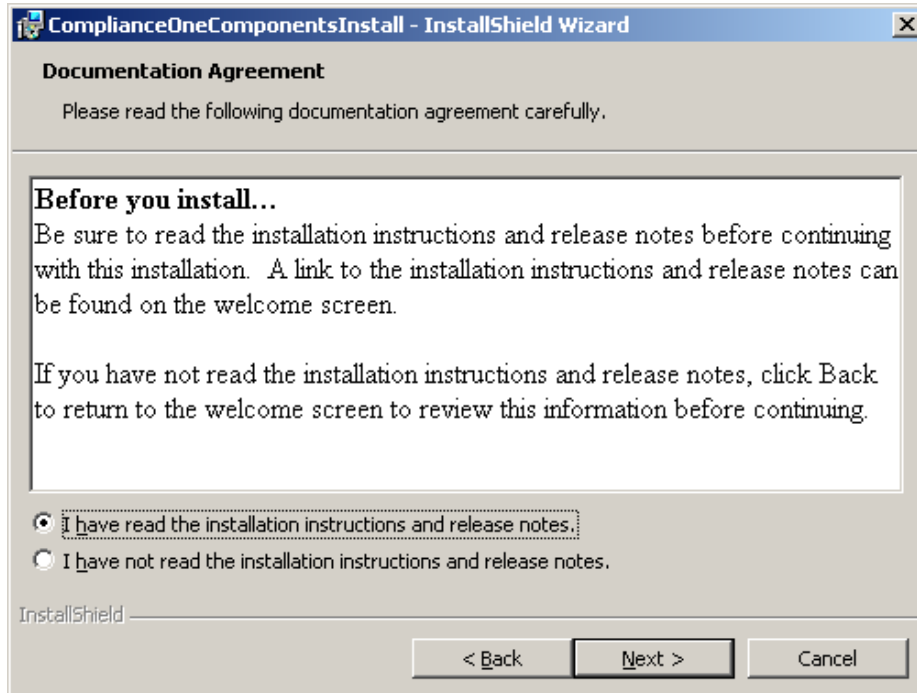
2. From the CD browse to the root of the CD and double-click **setup.exe** to begin the installation at the Welcome screen.

**Note:** If you are installing onto Windows Server 2008 32 bit, Windows Server 2008 R2 64 bit or Windows 7 Professional 32 and 64bit, rather than double-clicking **setup.exe**, you will need to right-click on the file name and select **Run as Administrator** from the context menu.

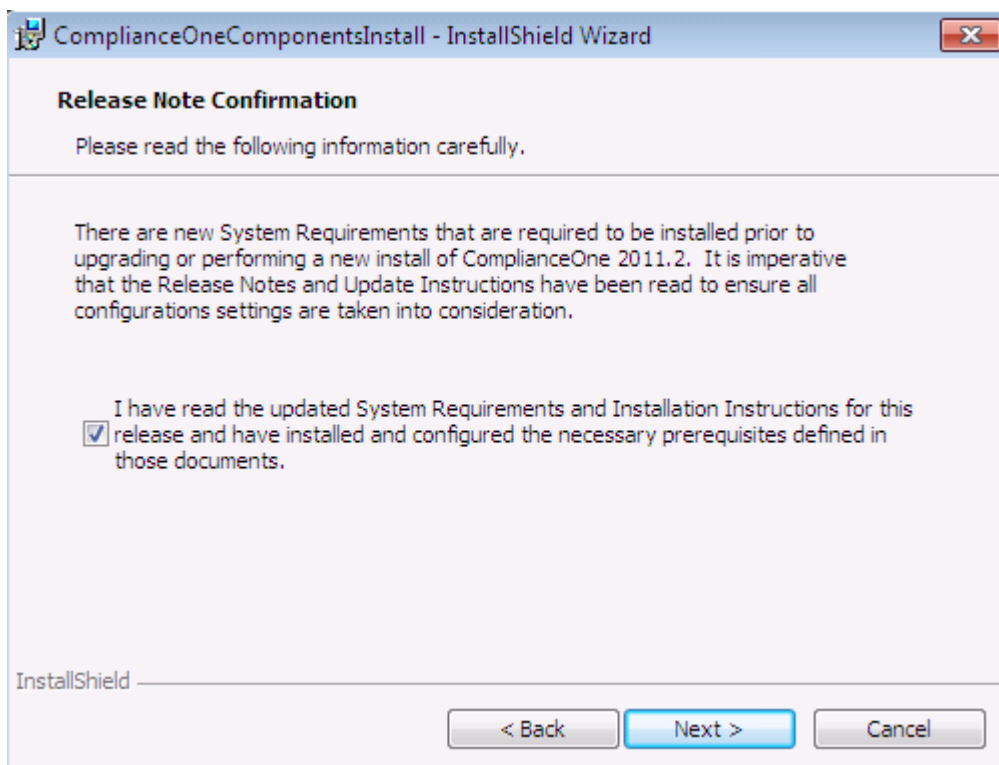


The installation instructions and the release notes are both linked from this screen. Please open and read each document before proceeding with the installation. If you have any questions at this point, you can click **Contact Us** for mailing, phone, fax, and Web-based contact options. When you are ready to begin the installation, click **Install ComplianceOne Solution**.

3. To proceed with the installation you must agree to the Documentation Agreement that you have read the release documents.

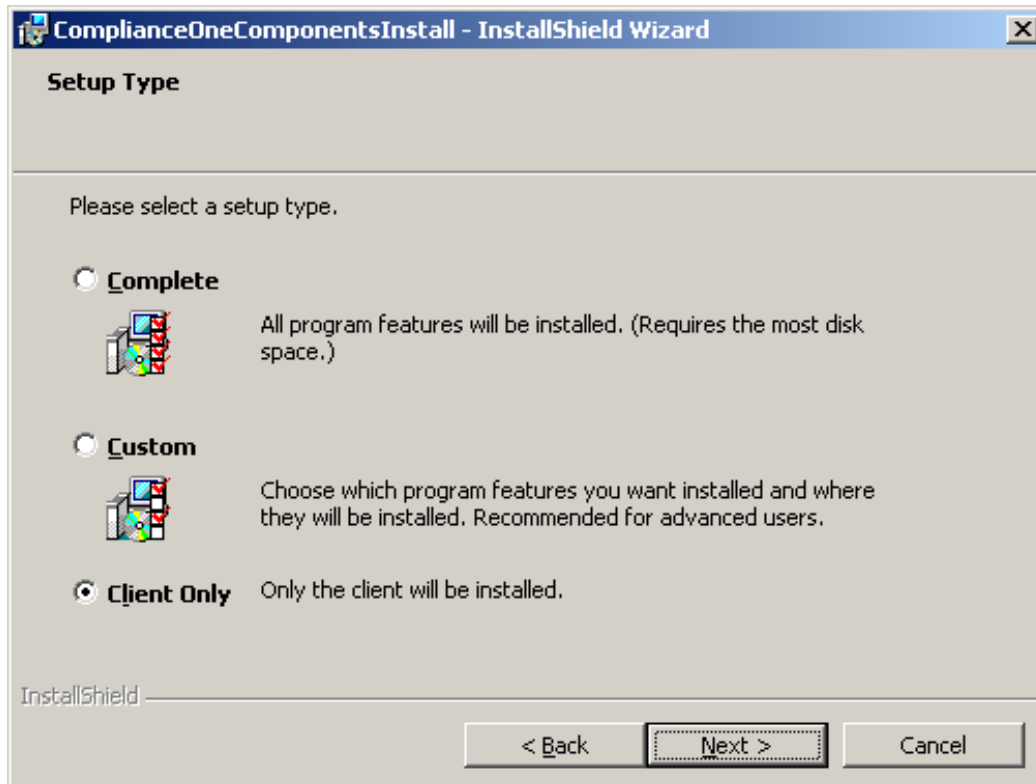


Click **Next**.



4. If you have not read the Release Notes or these installation instructions, please stop and do so. Select **I have read the updated System Requirements and Installation Instructions for this release and have installed and configured the necessary prerequisites defined in those documents**. Click **Next**.

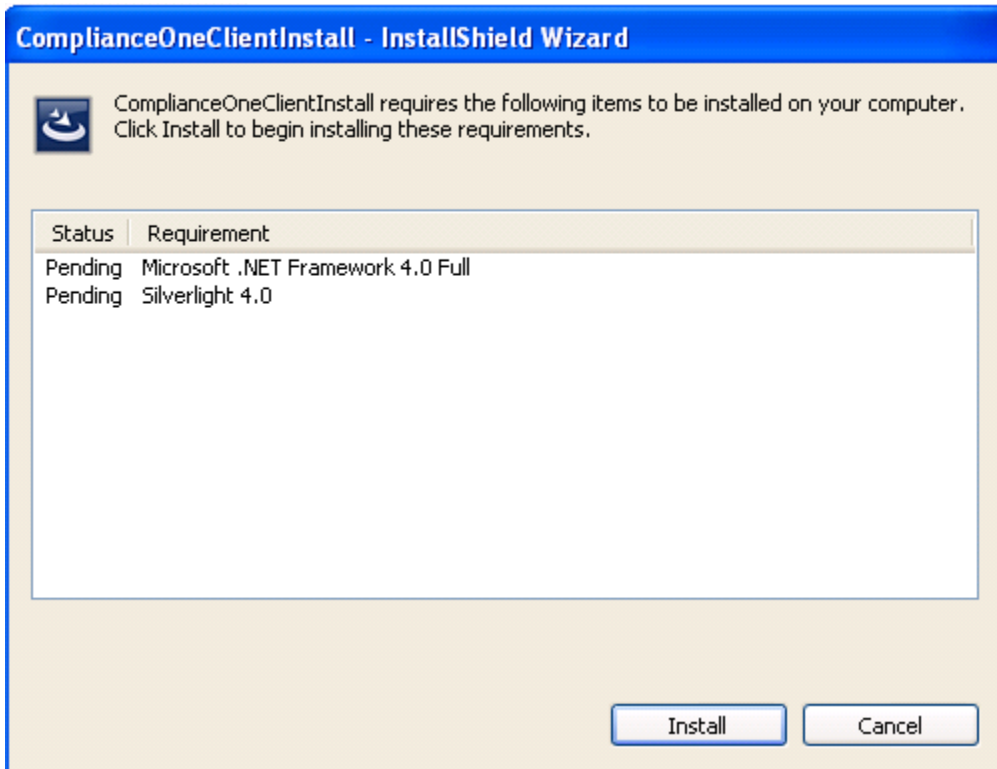
5. Select **Client** as the Setup Type for your installation.



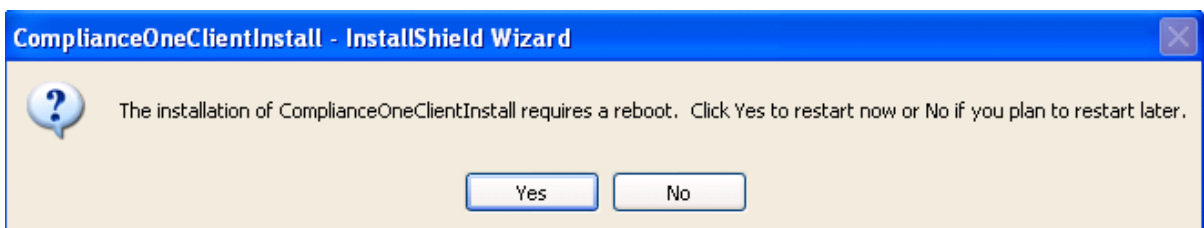
Click **Next**.

6. Your client is now ready to install. Click **Install** to proceed.

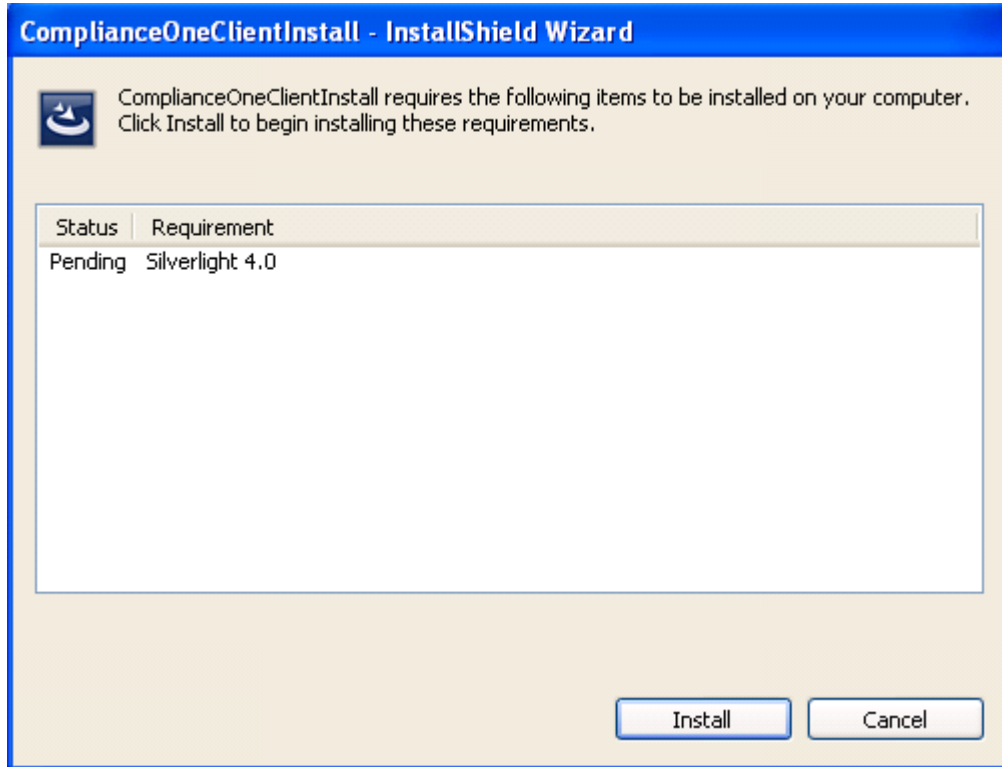
7. The installation program will check for the presence of Microsoft .NET Framework 4 and Silverlight 4.0. If one or both of these are missing you will be prompted to install them.



8. Click **Install** to begin the installation of the listed programs. The installation of .NET Framework 4 can be lengthy.
9. If one of the programs installed is .Net Framework, you will be asked to reboot your machine.

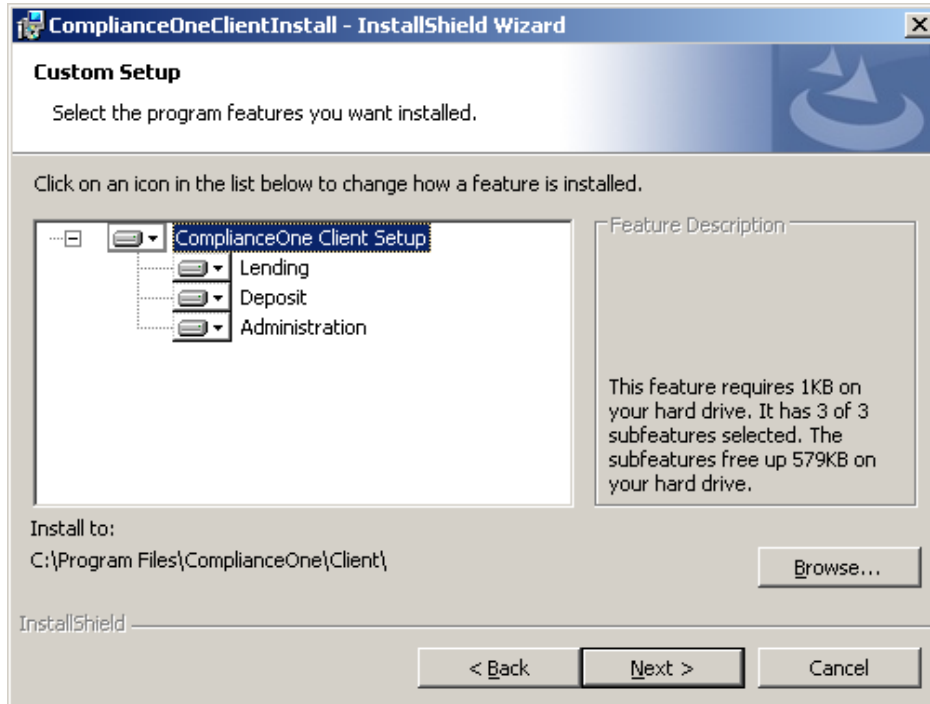


10. Please click **Yes** and reboot. After reboot the ComplianceOne installation program will automatically restart and pick up the product installation. You will not need to take any action to restart the product installation after the reboot.
11. If Silverlight also needs to be installed, the ComplianceOne installation program will show you a modified list.



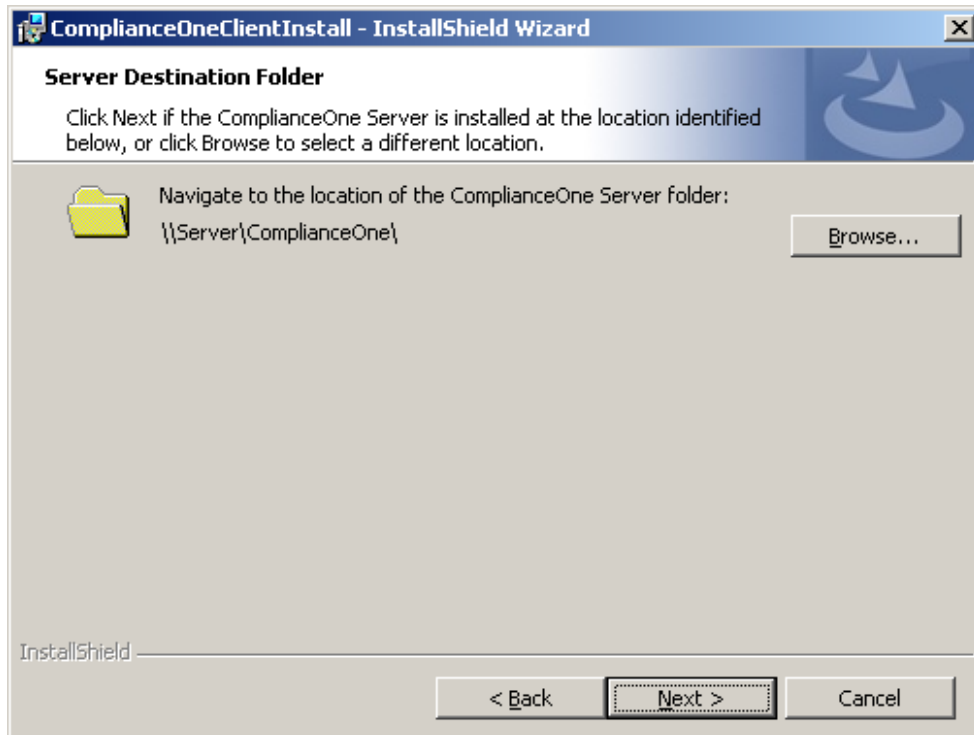
12. Click **Install** to install Silverlight. Note that a reboot is not required after the Silverlight installation.

13. Select one or more of the types of clients to install. All three types, Lending, Deposit, and Administration, are selected by default. If you do not want to install a particular client type, click the down arrow next to the client name and choose **This feature will not be available**.



The install path will default from 2011.2 and is the recommended install path. Click **Next** to continue.

14. The path listed for the ComplianceOne server location will be the path you selected in Release 2011.2.



Click **Next** to continue.

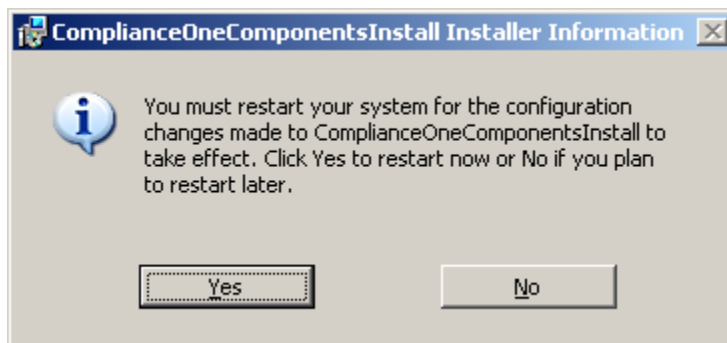
15. The installer will confirm the location of the server before continuing. If any difficulties are encountered, you may see a server error listed in the [error table](#).

16. If no difficulties are encountered, you will see the Client Ready to Install window. Click **Install** to begin the installation of the client.

17. Progress of the installation can be followed on your screen.

18. The Installation Completed window displays when the client installation has completed. Click **Finish** to end the client installation.

19. You will be notified that your machine must be rebooted. Click **Yes** to restart your machine. If you click **No**, the installation will end but do not use ComplianceOne without a reboot.



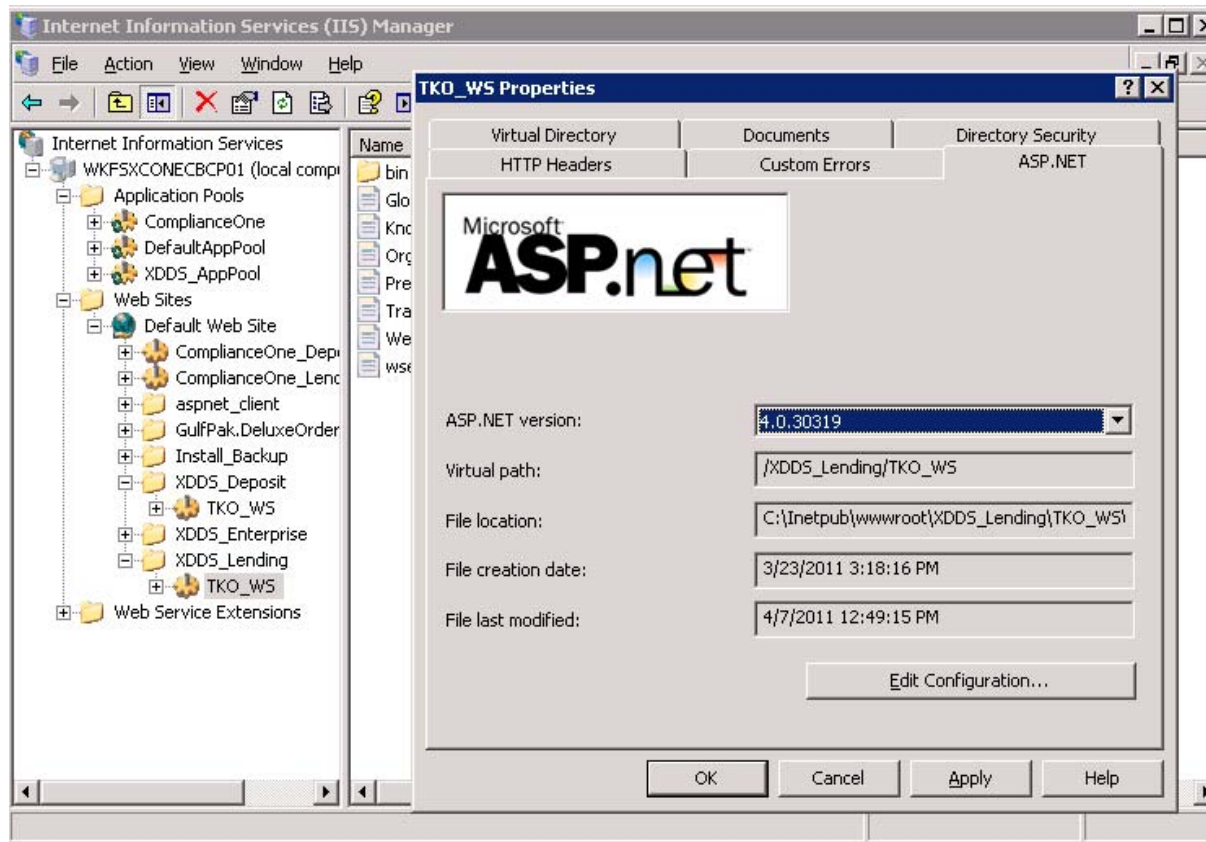
## Post-Installation Setup

After installing the 2011.3 update and before using 2011.3, we recommend that you verify your settings for .NET 4 are correct by validating the settings below. If you have not previously configured IIS for compability with C1, also see [Appendix C: Configuring IIS v.7.0 or Higher](#).

### Verify the Web Service on Windows Server 2003 is Using .NET 4

Microsoft .NET 4 Framework was installed and configured using instructions in this guide prior to upgrading ComplianceOne. After upgrading to this release, you will need to verify the ASP .NET version is indeed 4.0.

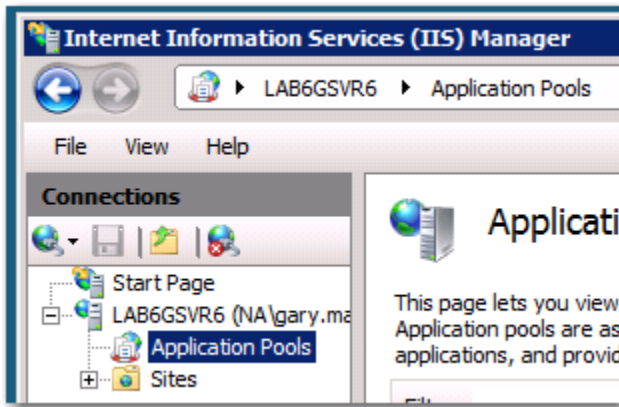
Open IIS Manager, navigate to the Default Web Site\XDDS\_Lending\TKO\_WS. Right-click and choose **Properties**. The ASP .NET version field in the ASP.NET tab should list 4.0.XXXXX. Repeat the process for XDDS\_Deposit.



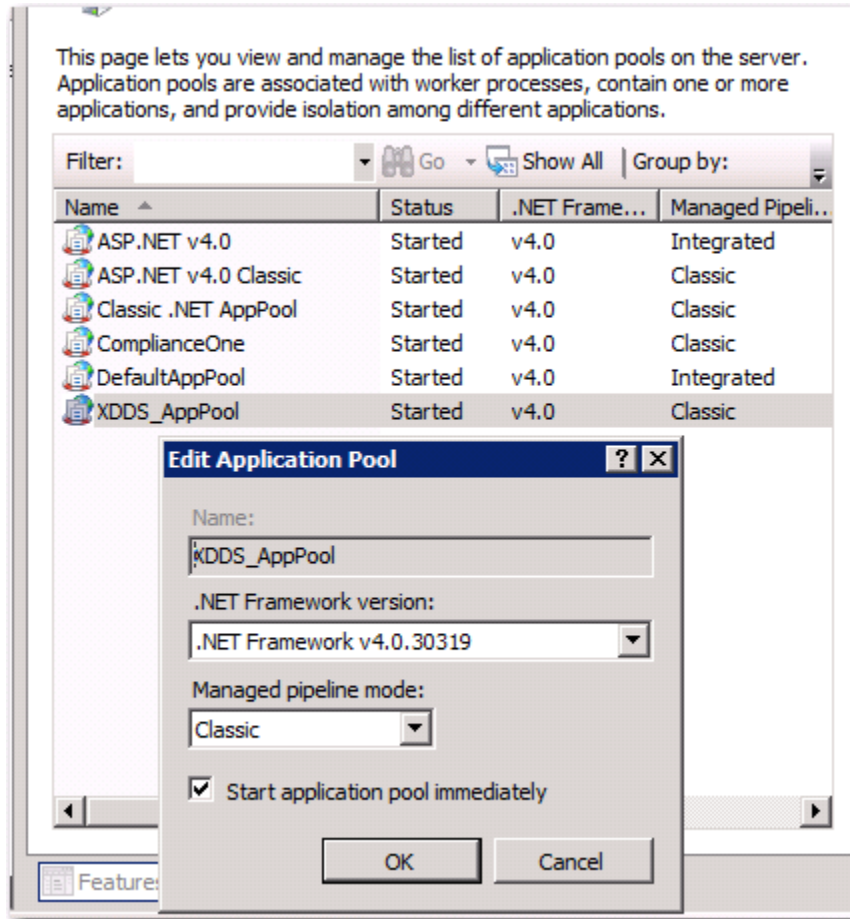
## Configure Application Pools on Windows Server 2008

Application pools have been added with this release to take advantage of new interface functionality currently under development. If you installed on Windows Server 2008, 32- or 64-bit, you need to verify that each Application Pool is pointing to .NET 4 Framework.

1. Open IIS manager from the Administrative Tools menu. Navigate to Application Pools.



2. Select Application Pools. Verify that each pool is pointing to the .NET 4 Framework. If not, right-click a pool and choose Edit.



## Change Server Folder Permissions

You will need to verify and perhaps update some of the folder permissions on your ComplianceOne application server.

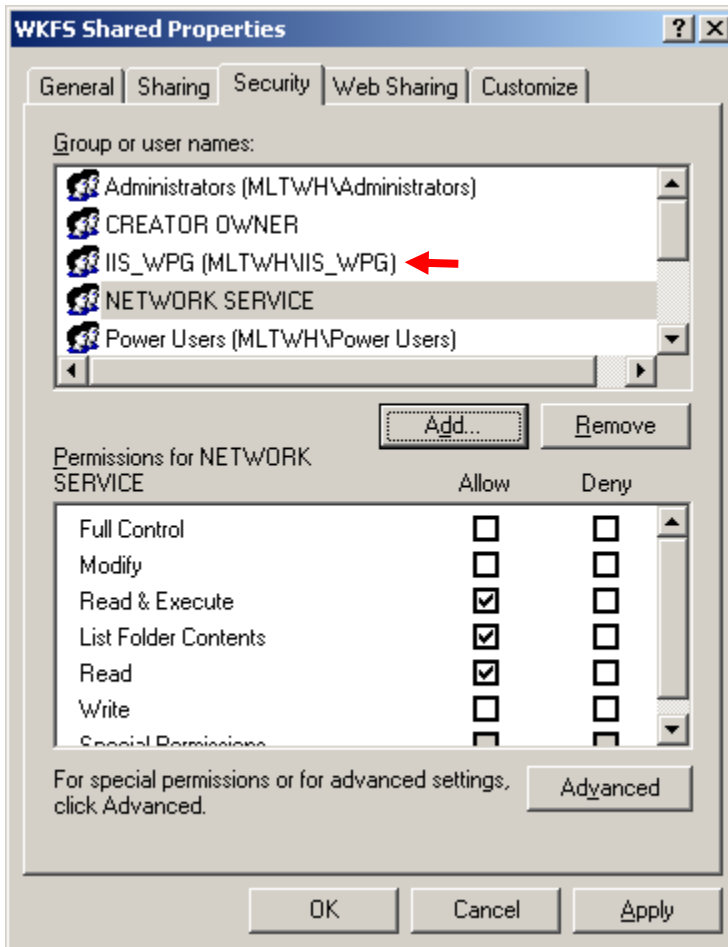
1. Navigate to C:\Program Files\Common Files\WKFS Shared on your ComplianceOne server.
2. Right-click on the WKFS Shared folder and select **Properties**.
3. Select the **Security** tab.
4. If your ComplianceOne server is installed on Windows XP, verify that ASPNET and Network Service users are listed in **Group or user names**.

If your ComplianceOne server is installed on Windows Server 2003, verify that IIS\_WPG and Network Service users are listed.

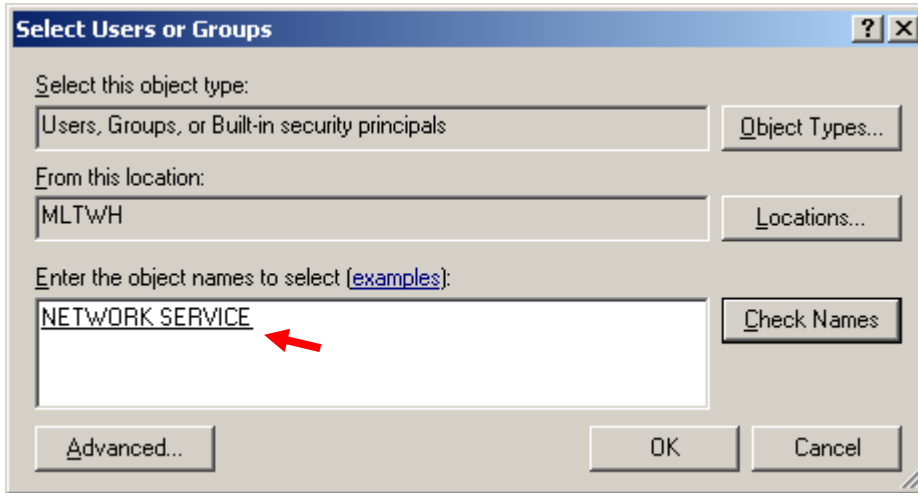
For either operating system, if both users are present skip to step 7. Otherwise continue for instructions on how to add a missing user.

**Note:** If you have installed on Windows Server 2008 32 bit, Windows Server 2008 R2 64 bit or Windows 7 Professional 32 and 64bit, you will need to verify that the Network Service has permissions.

Examples listed below are for Windows Server 2003.

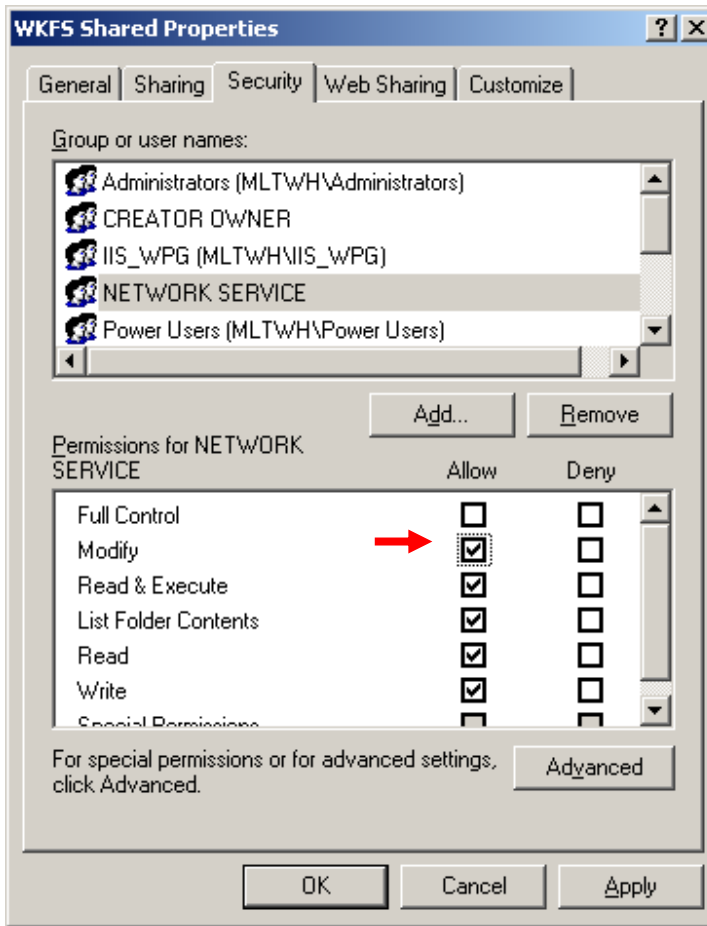


5. If Network Service or IIS\_WPG are not present, click **Add**.
6. In the **Enter the object names to select** field, enter the name of the missing user and click **Check Names**. If successful, the user name will be underlined.

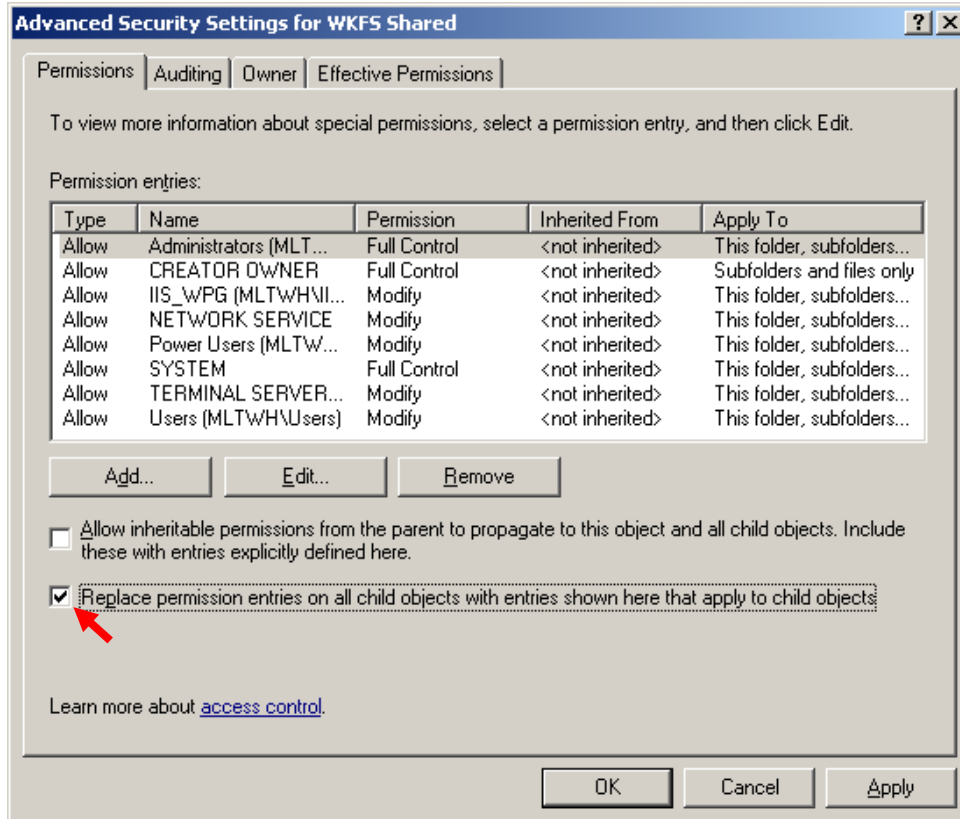


Click **OK**. The user should now be displayed on the **Group or user names** list.

7. Verify that all users and groups listed have at least **Modify** rights selected in the Allow column, of Permissions box below.



8. Click **Advanced**.
9. Select the **Replace permission entries on all child objects with entries shown here that apply to child objects** checkbox near the bottom.



10. Click **OK**.
11. Click **Yes** for the **Security** message:

This will remove explicitly defined permissions on all child objects and enable propagation of inheritable permissions to those child objects. Only inheritable permissions propagated from WKFS Shared will take effect. Do you wish to continue?

Permissions are reset on all files and folders.

12. Click **OK** to close the Properties dialog box.

## Gulfpak.ini Edits

If you did not need to save a copy of gulfpak.ini to your desktop to save some values related to interfaces as described in the [Pre-Installation Requirements](#) section of this document, skip this topic.

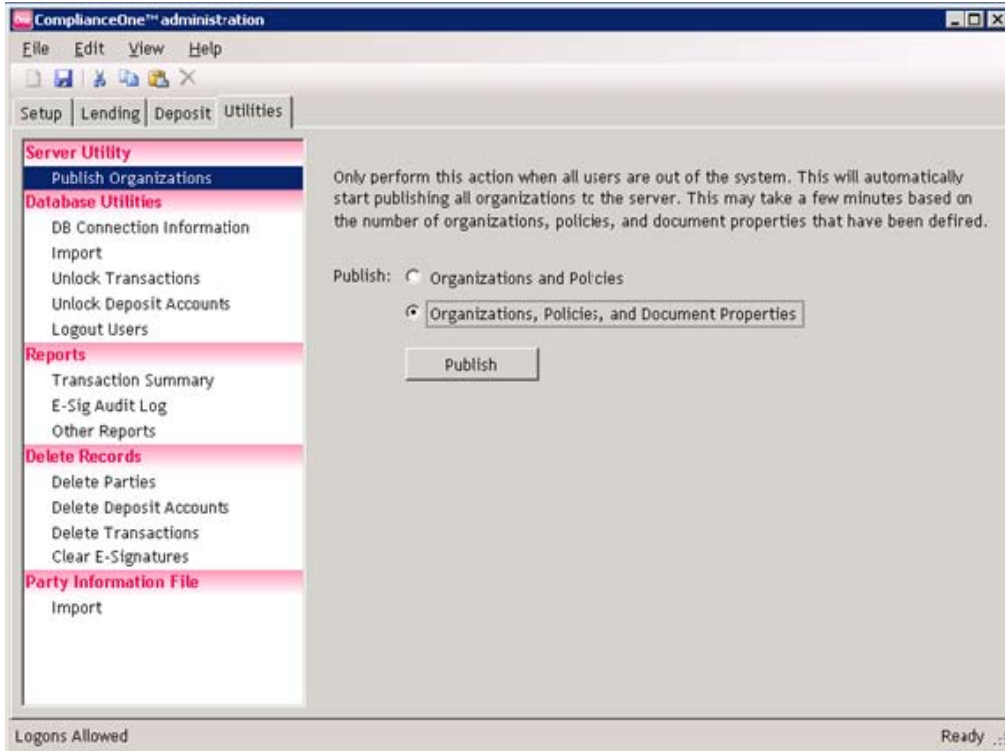
If you saved a copy of your 2011.2 **gulfpak.ini** file to your desktop as **gulfpak.bak.txt**, you will need to open the saved file and copy the values into the new **gulfpak.ini** file created by the 2011.3 installation update. To edit your 2011.3 **gulfpak.ini** file with the values from **gulfpak.bak.txt**:

1. Open **gulfpak.bak.txt** from your Desktop in Notepad. You can do this by double clicking the file or right-clicking on the desktop icon and choosing **Open with** from the context menu.
2. Open the 2011.3 **gulfpak.ini** file, located at C:\Program Files\ComplianceOne if you used the default installation path, in Notepad.
3. Beginning with **gulfpak.bak.txt**, locate any of the four lines with values, select the entire line, and copy it to the Clipboard. The four lines with possible values include:
  - INTERCEPTPATH=
  - XMLPATH=
  - CALYXPATH=
  - SUNTELLPATH=
4. Click on the **gulfpak.ini** window, find and select that line, and paste. The line in **gulfpak.ini** should now contain the same line that you had in **gulfpak.bak.txt**.
5. Repeat this operation for each of the four lines that contain values. You do not need to copy and paste lines that have no values.
6. When you're finished save **gulfpak.ini** and close both windows. We recommend you keep **gulfpak.bak.txt** until you are sure your interfaces operate correctly in Release 2011.3.

## Publish Your Organizations

After updating ComplianceOne, you will need to publish your organizations.

1. Log into administration and select the Utilities tab.
2. In the Server Utility section choose the second publishing option, **Organization, Policies, and Document Properties**.



3. Click the **Publish** button.

## Re-Enable User Logon

Prior to installing this update, you were asked to disable user logon in administration for the duration of the update. After completing this update, you need to allow logon for your users.

1. Log into administration.
2. Select the Utilities tab and choose Logout Users.
3. Clear the checkboxes for **Prohibit logons to Lending** and **Prohibit logons to Deposit**. Note that these changes are retained when you navigate away from this area.

## Update your Index Rate Histories

You will need to update your index rate histories using a file available on the Wolters Kluwer Financial Services Support Web site.

1. Use your browser to navigate to <http://support.wolterskluwerfs.com>.
2. Click Downloads from a menu near the top of the page.
3. Login to the downloads area using your Wolters Kluwer Financial Services login ID and password.

4. From the left choose Downloads.
5. Again from a new menu on the left choose ComplianceOne.
6. Scroll through the topics until you find the topic describing how to update indexes.
7. Instructions and a downloadable EXE file, **ComplianceOneIndexUpdate\_Month\_Year.exe**, are available to step you through the index update for ComplianceOne.

**Note:** The index update file, **ComplianceOneIndexUpdate\_Month\_Year.exe**, must be run on the ComplianceOne application server.

## Troubleshooting Your Installation

Every effort has been made to insure that your update installation proceeds without error. To aid troubleshooting, we include further discussion of:

- Errors that might occur which will take you out of the installation, leading to an incomplete installation or if you choose to cancel in the middle of the installation.
- Most errors are listed and described in the error table.
- Where to find the installation logs for more detail on any errors that occur.

### Incomplete Installation

Note that if an error is encountered during the ComplianceOne update installation leading to an incomplete installation, or if you cancel out of the installation, the installation process has a rollback feature. The rollback process uninstalls newly installed files and returns each component back to its original state prior to the update. The rollback feature works for the following ComplianceOne components:

- Expere DDS Web Services
- ComplianceOne Server
- Client

For instance, if the ComplianceOne server fails after a successful update of the Web services, the Web services won't be rolled back. Note that before each component is installed, existing files are backed up by the installation program. In the event of a failure leading to an incomplete installation, the backed up files are restored before the installation exits, restoring ComplianceOne to its previous state. Items backed up include:

- The web services upgrade installation will back up the web services files.
- The server update installation will back up the server files.

Backed up files are placed by component into the Install\_Backup folder from the root of the ComplianceOne installation, such as C:\Program Files\ComplianceOne\Install\_Backup\Component\ReleaseNumber\_Date\_Time\_of\_Backup. If backup fails for any reason, such as inadequate disk space, you will see the following error:

```
An error has occurred during the backup process of the ComplianceOne {component} installation. Please reference the install log file for additional information regarding the error and call SupportLine for assistance.
```

Log file location: Document and Settings\All Users\WoltersKluwer\ComplianceOne\Logs

## Installation Errors Table

Database Component Install Errors	
Error Message	Notes
Error 27502. Could not connect to Microsoft SQL Server 'instance name'. [DNETLIB][ConnectionOpen (Connect()).]SQL Server does not exist or access denied. (17)	The database instance does not exist or the service for the instance has been stopped. Clicking <b>OK</b> will return you to the SQL authentication window.
Error 27502. Could not connect to Microsoft SQL Server 'instance name'. Login failed for user 'username'. (18456)	SQL User or Password Failure. Clicking <b>OK</b> will return you to the SQL authentication window.
Error 27506. Error executing SQL script CheckUserSecurity.SQL Line 37. The SQL User does not have sufficient permissions to install ComplianceOne. Please refer to the installation instructions for the SQL permissions required to complete the ComplianceOne database installation (50000)	Insufficient SQL Permissions - The logged in user does not have sufficient permissions to attach the ComplianceOne databases. Clicking <b>OK</b> will take you to the Database Installation Failure window. <a href="#">More SQL permissions information</a> is available in this manual.
[SQL Server 2000 Not Supported ;Std installshield default; no text yet]	Clicking <b>OK</b> will take you to the Database Installation Failure window and then exit the installation. You will need to install a more recent version of SQL Server and restart this ComplianceOne update.
The ComplianceOne database SQL server location (instance) provided does not contain the ComplianceOne databases. Click "OK" to return to the previous screen and either select another instance or click "Cancel" to exit the server installation.	The ComplianceOne databases were not found at the database server location. Clicking <b>OK</b> will take you to the SQL authentication window.
INVALID DATABASE VERSION. You will need to be at the minimum version to update to version 2011.3. The installation will now exit.	ComplianceOne Databases Not At Supported Version - The databases are from a release earlier than 2011.2. Clicking <b>OK</b> will take you to the Database Installation Failure window and then exit the installation. You will need to upgrade your ComplianceOne installation to 2011.2 before proceeding with this update.
A later version of 'ComplianceOne Database' is already installed on this machine. The setup cannot continue.	ComplianceOne Database Current or Newer - The database version is current with the update release or from an even newer install. Clicking <b>OK</b> will take you to the Database Installation Failure window and then exit the installation.

<p>An error has occurred during the installation of the ComplianceOne database. Please refer to the {log file name} file for additional information. Contact SupportLine for assistance. Log file location: {path to log files}.</p>	<p>Clicking <b>OK</b> will take you to the Database Installation Failure window and then exit the installation.</p>
<p>One or more of the ComplianceOne databases are missing. The database installation cannot continue. Please contact SupportLine for assistance. The installation will now exit.</p>	<p>ComplianceOne Database Missing - One of the four ComplianceOne databases is missing. Clicking <b>OK</b> will take you to the Database Installation Failure window and then exit the installation.</p>

[Return to Database Installation Instructions](#)

### Web Services Component Install Errors

Error Message	Notes
<p>INVALID WEB SERVICES VERSION. The ComplianceOne Web Services must be updated to version XXX.XXXX before you can continue with this install. The installation will now exit.</p>	<p>The install will stop when you press <b>OK</b>. You will need to update your ComplianceOne installation to 2011.2 and start the update installation process from the beginning.</p>
<p>A later version is already installed.</p>	<p>The install will stop when you press <b>OK</b>. Release 2011.3 or later has already been installed.</p>
<p>The ComplianceOne Web Services do not exist on [computername]. Please select an alternate location or exit the installation.</p>	<p>Web services were not found on your computer. Clicking <b>OK</b> will return you to the Web services address window. Check the Web services address for errors.</p>

[Return to the Web Services Installation Instructions](#)

### ComplianceOne Server Component Install Errors

Error Message	Notes
<p>INVALID SERVER VERSION. The ComplianceOne Server must be updated to version XXX.XXXX before you can continue with this install. The installation will now exit.</p>	<p>The install will stop when you press <b>OK</b>. You will need to update your ComplianceOne installation to 2011.2 and start the update installation process from the beginning.</p>
<p>A later version is already installed.</p>	<p>The install will stop when you press <b>OK</b>. Release 2011.3 or later has already been installed.</p>
<p>The ComplianceOne Server does not exist on [computername]. Please select an alternate location or exit the installation.</p>	<p>The ComplianceOne server was not found on your computer. Clicking <b>OK</b> will return you to the server location window. Check the server location path for errors.</p>

<p>Client_Install Folder. Cannot delete ComplianceOne\Client_Install Folder. The install cannot delete the Client_Install folder at the following location: &lt;path to folder&gt;</p> <p>Please manually remove this folder before selecting "Next" to continue. For additional information on how to properly remove this folder, please refer to the ComplianceOne Update Instructions.</p>	<p>Before continuing with your ComplianceOne update installation, you will need to remove a folder from your ComplianceOne application server. Using Windows Explorer navigate to the root of the ComplianceOne folder, the default path being C:\Program Files\ComplianceOne. Beneath the ComplianceOne folder there should be a sub-folder named Client_Install. Select this folder and delete it. Return to the error message display and click <b>Next</b> to continue.</p>
<a href="#">Return to the ComplianceOne Server Installation</a>	
<b>ComplianceOne Client Component Install Errors</b>	
<b>Error Message</b>	<b>Notes</b>
<p>INVALID CLIENT VERSION. You need to be at the minimum version to update to version XXX.XXXX. The installation will now exit.</p>	<p>The install will stop when you press <b>OK</b>. You will need to update your ComplianceOne installation to 2011.2 and start the update installation process from the beginning.</p>
<p>A later version of 'ComplianceOne Client' is already installed on this machine. The setup cannot continue.</p>	<p>The install will stop when you press <b>OK</b>. Release 2011.3 or later has already been installed.</p>
<a href="#">Return to the Client Component Installation</a>	

## Log Files

An install log file will be created for each component that initiated an installation. The install logs will be placed at C:\Documents and Settings\All Users. The logs record both the successful and unsuccessful operations during the product update installation. Logs are particularly helpful when you encounter an error. Logs can be opened and read in a text editor such as Notepad.

The following is a list of all of the components and their corresponding install logs created for ComplianceOne:

- ComplianceOne All-In-One, ComplianceOneComponentsInstall\_X\_X\_XXXX.log
- ComplianceOne Database, ComplianceOneDatabaseInstall\_X\_X\_XXXX.log
- ComplianceOne Web Services creates three logs:
  - ComplianceOneWebServicesInstall\_X\_X\_XXXX.log
  - XDDSLendingInstall\_X\_X\_X\_XXXX.log
  - XDDSDepositInstall\_X\_X\_X\_XXX.log
- ComplianceOne Server, ComplianceOneServerInstall\_X\_X\_XXXX.log
- ComplianceOne Client, ComplianceOneClientInstall\_X\_X\_XXXX.log

Note that the X\_X\_XXXX in the log filename is the version number of the component installed and for this release will be 2\_1\_0\_2579, for example, ComplianceOneAllInOneInstall\_2\_1\_0\_2579. Logs are also created for Expere DDS Lending and Expere DDS Deposit but these logs will not contain the version number in the filename.

### Error Logging and Windows 2008 Server

If your ComplianceOne Server is hosted on a machine with both Windows 2008 Server and Terminal Services, the ComplianceOne product logs may not be updated for ComplianceOne-related errors if you are not the same user that initially installed ComplianceOne on the system. This may occur even if you have administrative rights on the system.

Errors instead may be logged in the Internet Information Server "virtual store" with a generic path:

```
C:\Users\UserName\AppData\Local\VirtualStore\ProgramData\WoltersKluwer\ComplianceOne\Logs\Admin.log
```

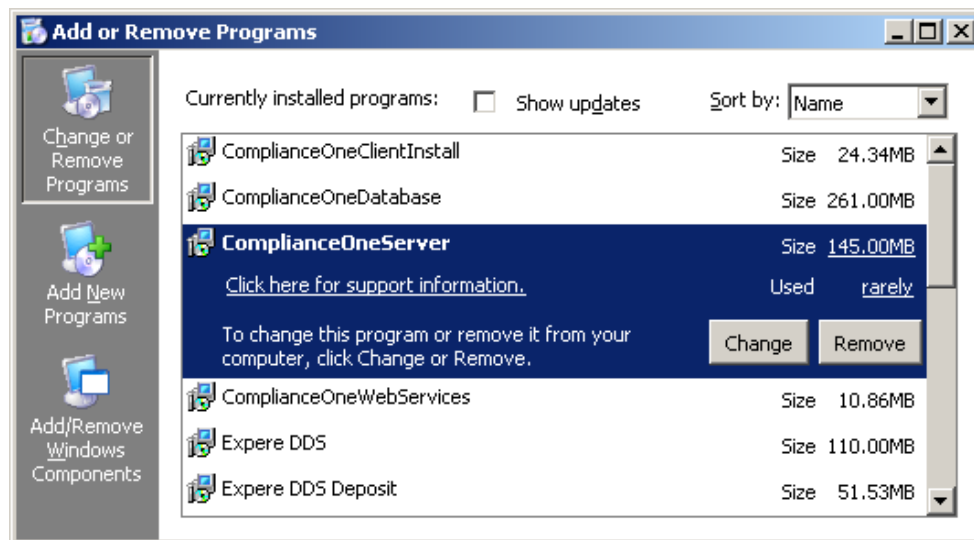
You can also use the %userprofile% environment variable to navigate to Admin.log:

```
%userprofile%\appdata\Local\VirtualStore\programdata\wolterskluwer\ComplianceOne\Logs
```

## Uninstall

Since the ComplianceOne update installation is a multi-component installation, each component has to be uninstalled separately from Control Panel. Each component is listed in Control Panel under Add/Remove Programs:

- ComplianceOne Database
- ComplianceOne Web Services
- ComplianceOne Server
- ComplianceOne Client Install
- Expere DDS (Lending)
- Expere DDS Deposit



**Warning!** Uninstalling any one of the ComplianceOne components will render your ComplianceOne installation non-functional.

Several components can only be removed. These include:

- ComplianceOne Client Install
- ComplianceOne Database

To remove a component, select it from the list and click **Remove**. If you click **Remove**, you will be asked if you wish to remove the component from your computer. If you select **Yes**, the component will be removed and you will be requested to reboot. The component will no longer be listed in the Control Panel, Add/Remove Programs list.

The remaining components can be removed or changed. These include:

- ComplianceOne Web Services - Clicking **Change** gives you the options to **Modify**, **Repair** or **Remove**. **Modify** allows you to change options and reinstall; **Repair** will reinstall to repair corrupt files.
- ComplianceOne Server - Clicking the **Change** button will give you the same result as clicking **Remove**: the component will be uninstalled.
- Expere DDS (Lending) - Clicking **Change** gives you the options to **Modify**, **Repair** or **Remove**. **Modify** allows you to change options and reinstall; **Repair** will reinstall to repair corrupt files.
- Expere DDS (Deposit) - Clicking **Change** gives you the options to **Repair** or **Remove**. **Repair** will reinstall to repair corrupt files.

Note that if you choose to uninstall, you should uninstall all of the components. Uninstalling one component will in most situations render your ComplianceOne application unusable. When you uninstall ComplianceOne Release 2011.3, your previous 2011.2 release will be removed as well. Many items remain after the uninstall, including:

- The backup folders and all the contents of the backup folders are retained.
- Previous virtual directories created prior to the 2011.3 ComplianceOne Web Services installation are retained: GulfPak.DDS.WebApp and GulfPak.DDS.WebApp\_Dep.
- Note that files installed with 2011.2 as part of that base installation, that is, files that were not updated by this installation process, are not deleted during the uninstall. These include files related to core interfaces, custom forms, and SQL databases. These will remain in place after the uninstall.

## Appendix A: Installing and Configuring .NET 4

The file for installing .NET Framework 4 can be found on your ComplianceOne CD in the Applications\Utilities folder. Double-click the EXE file to begin the installation. You will be asked to accept the license agreement before proceeding. You will need to click **Install** to begin the installation and **Finish** after it has completed. There are no other choices to make.

If you are installing .NET 4 on Windows Server 2003, you may encounter the following window, prompting you to install Windows Imaging Component.



Click the link in the warning box, which brings you to a Microsoft download page where you can install the Windows Imaging Component (WIC). Choose the English language installer option and click **Download**. (wic\_x86\_enu.exe is the English option.) Click **Run** to run the installation.

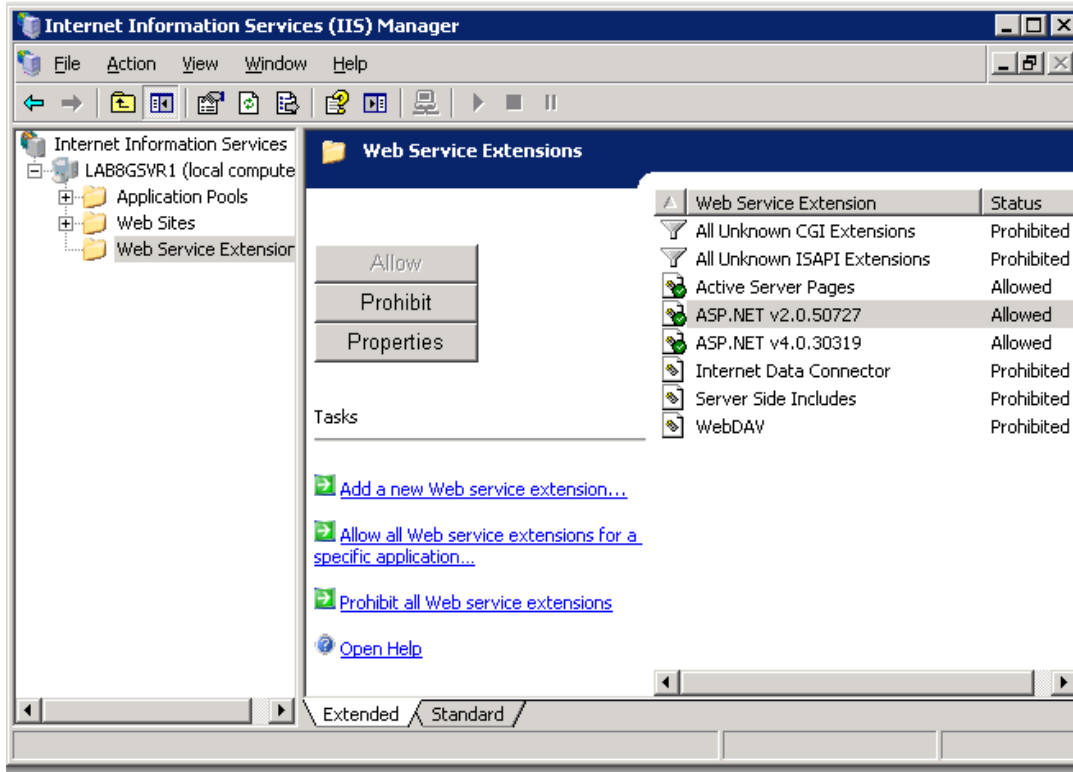
When the Windows Imaging Component installation is complete, you must restart the .NET 4 Framework install.

### Configuring .NET 4 on Windows Server 2003

Once .NET 4 Framework is installed, complete the following configuration steps.

1. Open IIS by clicking Administrative Tools from the Start menu. Select Internet Information Services (IIS).

2. Navigate to the Web Service Extension folder.



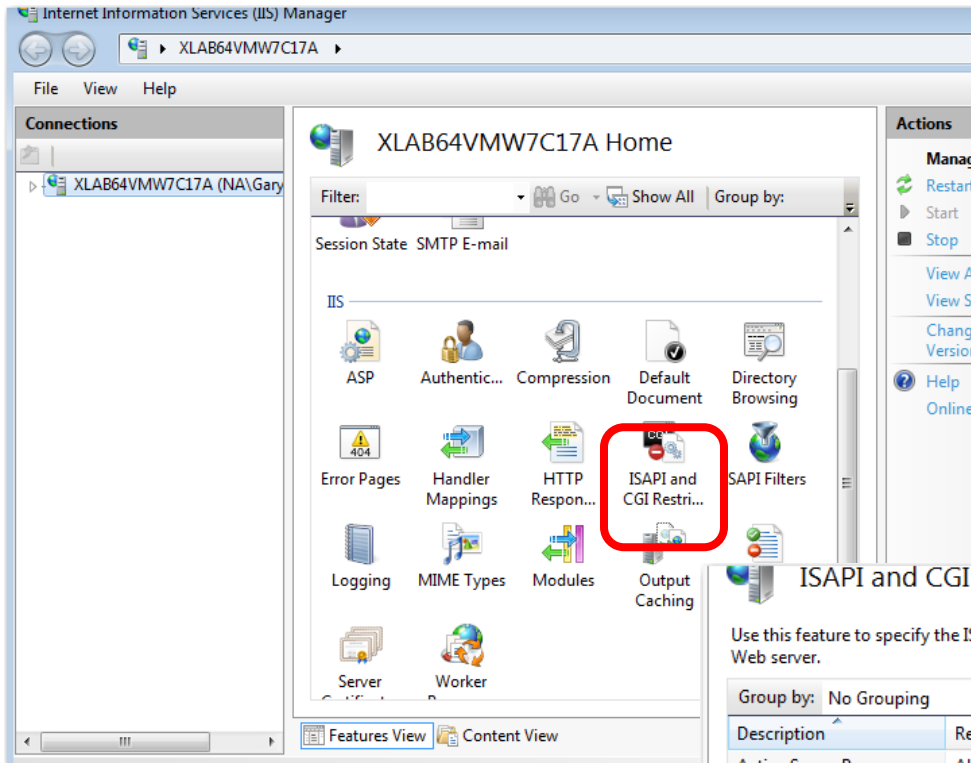
3. Set the following Web Service Extensions to **Allowed** (if prohibited).

- ASP .NET v2.0.50727
- ASP .NET v4.0.30319

## Configuring .NET 4 on Windows Server 2008

Once .NET 4 Framework is installed, for Windows Server 2008, both 32- and 64-bit, you need to verify that the ISAPI and CGI Restrictions are set to Allowed.

1. Open IIS by clicking **Administrative Tools** from the **Start** menu. Select **Internet Information Services (IIS)**. On the features panel, double click **ISAPI and CGI Restrictions** button to open it.
2. Verify that the restrictions are all set to **Allowed**.



### ISAPI and CGI Restrictions

Use this feature to specify the ISAPI and CGI extensions that can run on the Web server.

Group by: No Grouping

Description	Restriction	Path
Active Server Pages	Allowed	%windir%\system32\inet
ASP.NET v2.0.50727	Allowed	%windir%\Microsoft.NET
ASP.NET v2.0.50727	Allowed	%windir%\Microsoft.NET
ASP.NET v4.0.30319	Allowed	C:\Windows\Microsoft.N
ASP.NET v4.0.30319	Allowed	C:\Windows\Microsoft.N

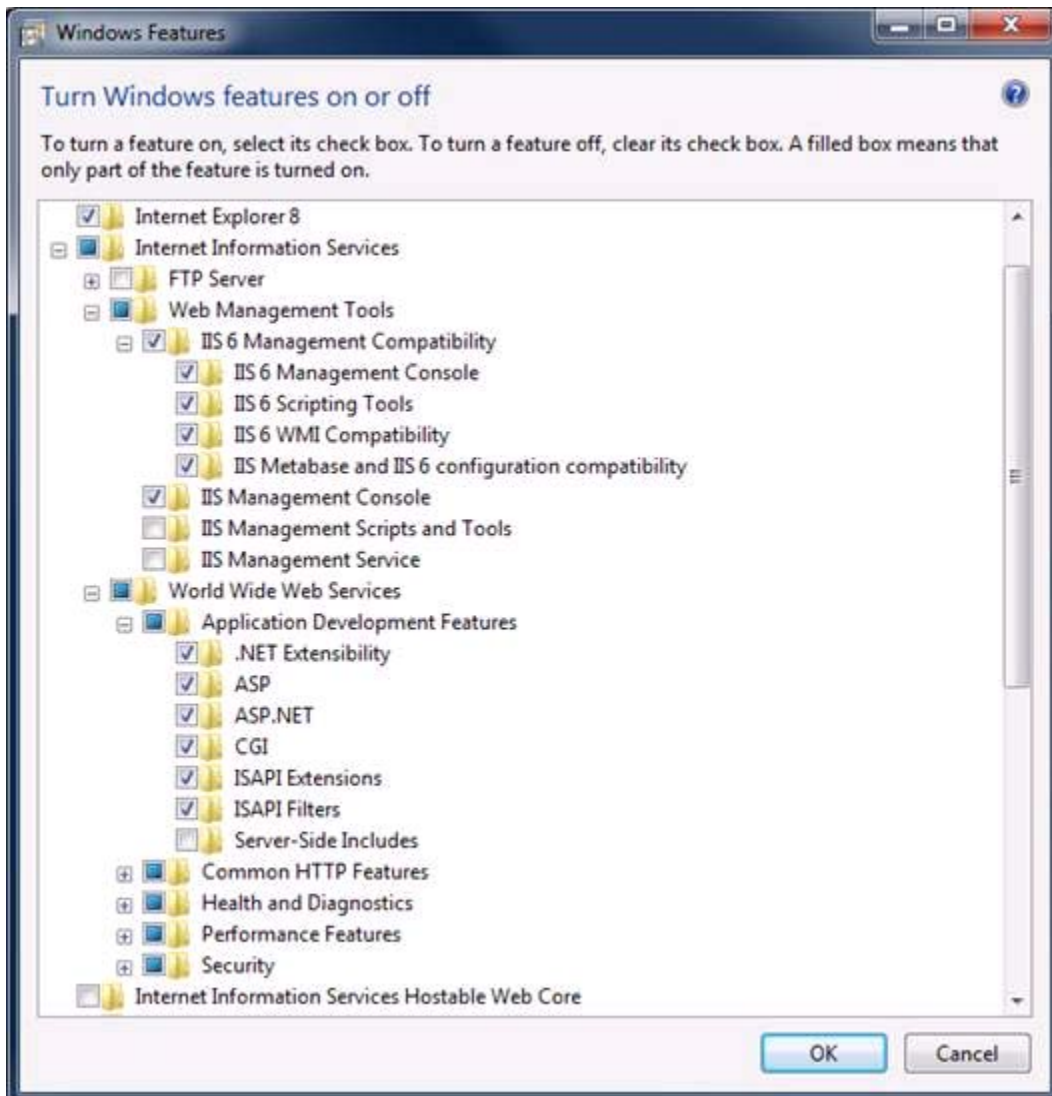
## Appendix B: Installing ASPNET MVC3

The file for installing ASPNET MVC3 can be found on your ComplianceOne CD in the Applications\Utilities folder. Installation of ASP.NET MVC3 is required for both Windows Server 2003 and 2008. Double-click the EXE file to begin the installation. You will be asked to accept the license agreement before proceeding. You will need to click **Install** to begin the installation, choose **Short Install** and **Finish** after it has completed. There are no other choices to make.

No configuration of ASPNET MVC3 is required before using ComplianceOne.

## Appendix C: Configuring IIS v7.0 or Higher

Backward compatibility with IIS 6 must be enabled if your ComplianceOne server is using IIS 7 or higher, for instance, such as is found on Windows Server 2008. This compatibility setting is available as a feature in Windows Server 2008. To enable or verify this compatibility, from **Start** choose **Control Panel, Turn Windows features on or off**. You can also type the word **feature** into the Search box to bring up this option. On the **Turn Windows features on or off** window, navigate to **Web Management Tools** and select **IIS 6 Management Compatibility**. Make sure all sub-items are also selected. Click **OK** to save any changes.



# How to Contact Us

## Support Web Site

Visit our Software Support Web site for documentation downloads, frequently asked questions, training, or support information at the following location: [Support.WoltersKluwerFS.com](http://Support.WoltersKluwerFS.com)

We believe you will find this to be a valuable and convenient source of support information as well as links to beneficial industry sites.

## Downloading

To access the documentation as noted above and in the installation, go to our Software Support Web site, [Support.WoltersKluwerFS.com](http://Support.WoltersKluwerFS.com). Select Log In from the upper right corner. Enter your User Name and Password. If you are new to this site, register for a User Name and Password. Once you are logged in, follow the links for ComplianceOne documentation.

## E-Mail

Questions related to the installation process may be sent to [ComplianceOneTechSupport@wolterskluwer.com](mailto:ComplianceOneTechSupport@wolterskluwer.com).

## Phone

You can telephone our SupportLine technicians at 1-800-274-2711, ext. 123211. Our support staff is available Monday through Friday, 7 A.M. to 7 P.M. CST. Voice mail operates continually, allowing you to leave us a message after hours and on weekends. To help us handle your question as quickly as possible, have these items available before you call:

- product name and version number
- customer number
- operating system and version number; service pack numbers, if installed

## Fax

You may fax us at (320) 240-4252.



